

# FAX-B340

## PARTS CATALOG

REVISION 0

FAX-B340

H12-0062 120V

**Canon**

MAR. 1994

**HY8-39A2-000**

# **FAX-B340**

## **PARTS CATALOG**

**Canon**

## Application

This manual has been issued by Canon Inc. for qualified person to learn technical theory, installation, maintenance, and repair of products. This manual covers all localities where the products are sold. For this reason, there may be information in this manual that does not apply to your locality.

## Corrections

This manual could include technical inaccuracies or typographical errors due to improvements or changes in the products. When changes occur in applicable products or in the content of this manual, Canon will release technical information as the need arises. In the event of major changes in the contents of this manual over a long or short period, Canon will issue a new editions of this manual.

The following paragraph does not apply to any countries where such provisions are inconsistent with local law.

## Trademarks

The product names and company names described in this manual are the registered trademarks of the individual companies.

## Copyright

This manual is copyrighted with all rights reserved. Under the copyright laws, this manual may not be copied, reproduced or translated into another language, in whole or in part, without the written consent of Canon Inc., except in the case of internal business use.

Copyright © 1994 by Canon Inc.  
Office Imaging Products Technical Support Dept.  
CANON INC.  
30-2 Shimomaruko 3-Chome, Ohta-ku, Tokyo 146,  
Japan

## DTP Systems

This manual was produced on Apple® Macintosh® II ci personal computer and Apple® Laser writer II® NTX-J laser beam printer, final pages were printed on Varityper™ 4300 RIP.  
Parts layout illustrations were created using Aldus® FreeHand 3.1J.  
Documents and page layouts were created using QuarkXpress® 2.04J.  
Parts lists were created using Helix Technology® Helix Express® and converted to PICT format by Solutions, Inc.® Super GLUE II™.

## 適応

本マニュアルは、該当製品のサービスを行う技術者が、技術学習、設置、保守、修理を行う上で必要な技術情報を提供することを目的としてキヤノン株式会社が発行しています。本マニュアルは、該当製品が販売される全地域に対応する内容で作成されているため、貴地域に非該当の情報が記載されている場合があります。

## 改訂

本マニュアルには、該当製品の改良変更のため、技術的に不正確な記述、あるいは、ミスプリントが含まれることがあります。これらの理由により、本マニュアルの内容に変更が発生した場合には、随時技術情報を発行しています。長期的、あるいは、短期的に本マニュアルの内容に大幅な変更が発生した場合には、改訂版を発行します。

下記の内容は、本マニュアル及び製品が使用される国の法律及び条例に合致しない場合には適応されません。

## 商標

本マニュアル中に記載されている各製品名、各会社名は各社の登録商標あるいは商標です。

## 著作権

本マニュアルの著作権は、キヤノン株式会社に帰属しています。キヤノン株式会社の書面による同意の無い場合には、本マニュアルの一部あるいは、全体を複製または、転載、他の言語への翻訳等が禁止されています。ただし、業務上マニュアルの一部分のコピーを必要とする場合には、この限りではありません。

Copyright © 1994 by Canon Inc.  
キヤノン株式会社  
映像事務機サービス技術課  
〒146 東京都大田区下丸子3-30-2

## DTPシステム

このマニュアルは、Apple® Macintosh® II ci パーソナルコンピュータと Apple® LaserWriter II® NTX-J レーザービームプリンタで作られ、ファイナルページを Varityper™ 4300 RIP でプリントしました。  
パーツレイアウトイラストは、Aldus® FreeHand 3.1J を使用しました。  
文章とページレイアウトは、QuarkXpress® 2.04J を使用しました。  
パーツリストは、Helix Technology® Helix Express® で作り Solutions, Inc.® Super GLUE II™ で PICT フォーマットに変換しました。

# I. CONTENTS

1. ILLUSTRATION INDEX
2. PARTS LAYOUT & PARTS LIST
3. SCREWS & WASHERS LIST
4. TOOL
5. GUIDE TO REPLACEMENT
6. NUMERICAL INDEX

# II. ABOUT THIS MANUAL

## 1. ILLUSTRATION INDEX

For illustration index, the parts layout illustrations in this parts catalog are listed in abbreviated form in order of illustration number to identify the pages they appear on. To find an illustration of a part, see the ILLUSTRATION INDEX.

## 2. PARTS LAYOUT & PARTS LIST

### Parts layout illustration

#### a) Parts search

Find a part from the parts layout illustration and find its key number from the parts list to identify the part number and name. For screws, nuts, washers, lock washers, pins, spacers, see 3. SCREWS & WASHERS LIST.

**Note:** If parts have the same or similar shape but different specifications, their key number is assigned to several part numbers and names in the parts list.

#### b) Parts replacement procedure

The parts layout illustrations are arranged according to the disassembly procedure of the product.

The parts require carefully work are marked "See page 5-x". So refer to the corresponded page "5" (GUIDE TO REPLACEMENT).

The letters (A, B) etc.) in the illustration indicate the connection locations of cables and screws,

### Parts list

#### a) FIGURE & KEY No.

The FIGURE & KEY No. column corresponds to the key numbers assigned to the parts in the parts layout illustration.

It also corresponds to the part locations printed on the PC board.

#### b) PART NUMBER

The PART NUMBER column gives the part numbers corresponding to the key numbers. To order a part, indicate the part number clearly.

**Note:** Parts marked NPN are not service parts.

#### c) RANK

The service parts with N in the RANK column are order parts.

#### d) QTY

The QTY column gives the number of parts in the corresponding components layout illustration.

#### e) DESCRIPTION

The DESCRIPTION column gives the part names in English.

To order a part, indicate the part name, too.

## 3. SCREWS & WASHERS LIST

This is a list of screws, nuts, washers, lock washers, pins, and spacers.

## 4. TOOL

This is a list of tools used for servicing products.

## 5. GUIDE TO REPLACEMENT

Explains the special cares and cautions for the parts replacement.

## 6. NUMERICAL INDEX

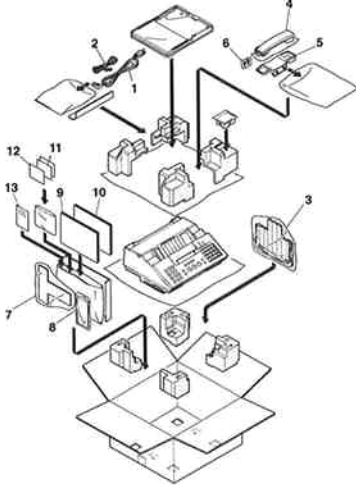
All the parts listed in this parts catalog are arranged in order of part number. You can identify part locations and names from the NUMERICAL INDEX..

This page intentionally left blank

# 1. ILLUSTRATION INDEX

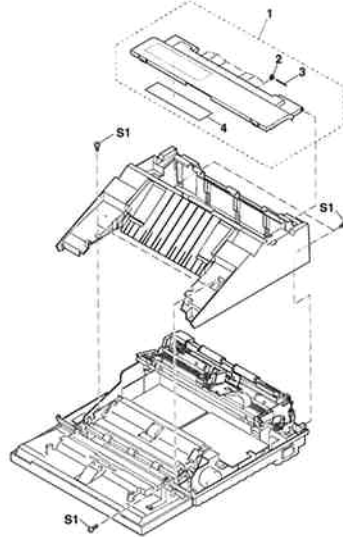
**FIGURE 1** PACKAGE CONTENTS

See Page  
2 - 1



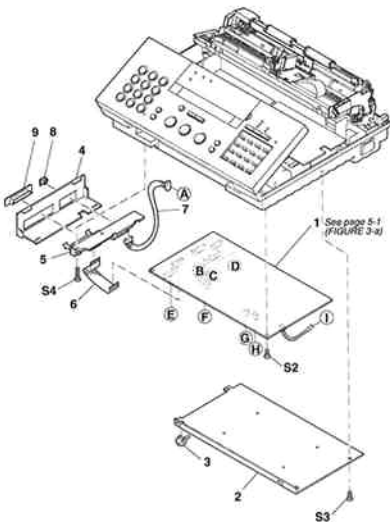
**FIGURE 2** UPPER COVER ASS'Y

See Page  
2 - 3



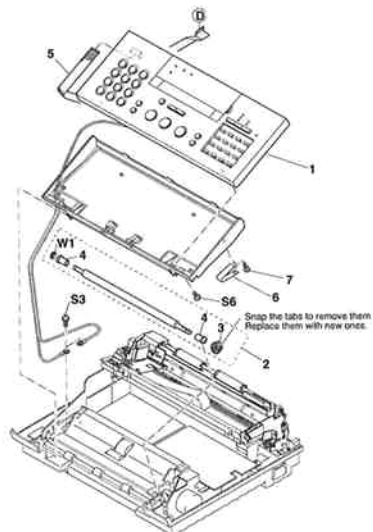
**FIGURE 3** SCNT & INTERFACE BOARD ASS'Y

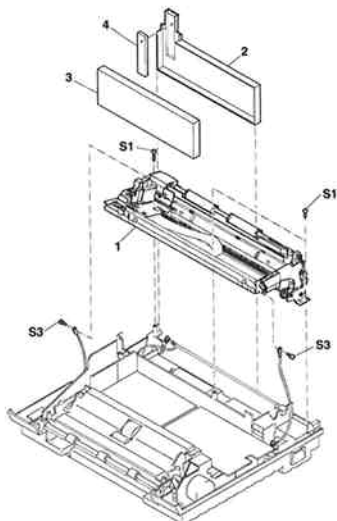
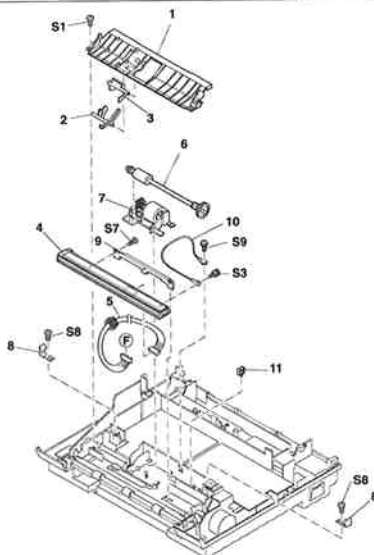
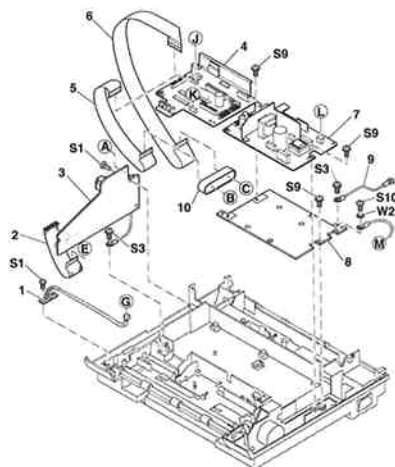
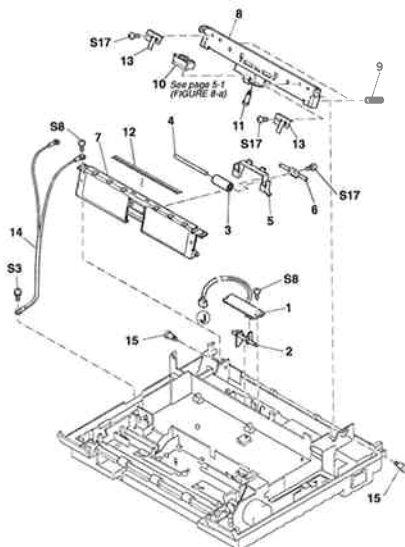
See Page  
2 - 5



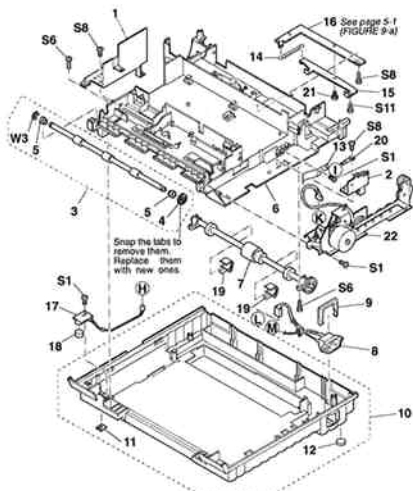
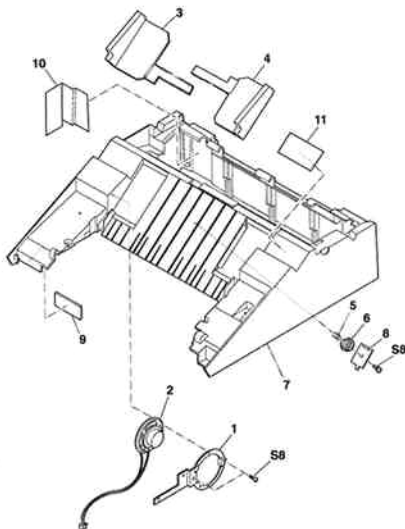
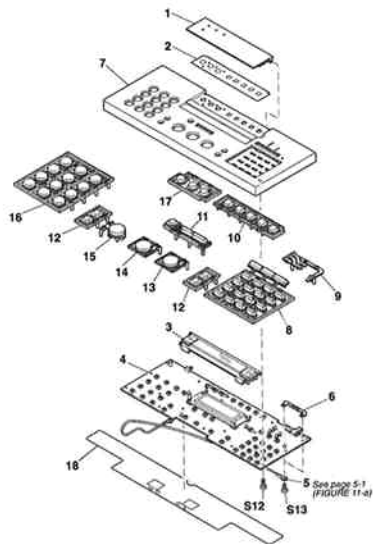
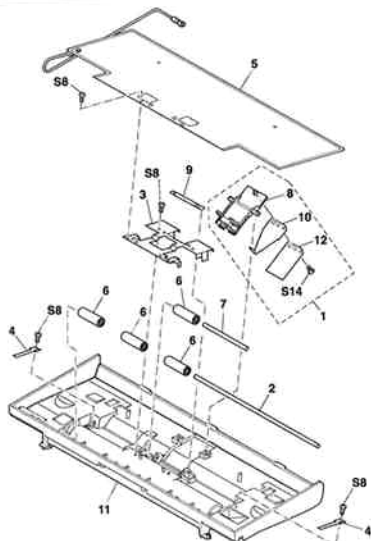
**FIGURE 4** OPERATION PANEL ASS'Y & ADF ASS'Y, UPPER

See Page  
2 - 7



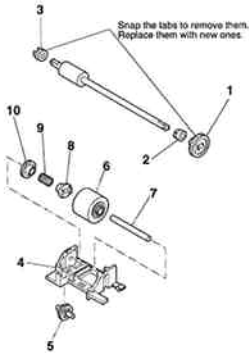
**FIGURE 5** PRINTER ASS'YSee Page  
2 - 9**FIGURE 6** ADF, LOWERSee Page  
2 - 11**FIGURE 7** NCU & DRIVER BOARD ASS'Y, POWER SUPPLYSee Page  
2 - 13**FIGURE 8** RECORDING PAPER GUIDESee Page  
2 - 15



**FIGURE 9** MAIN FRAMESee Page  
2 - 17**FIGURE 10** UPPER COVERSee Page  
2 - 19**FIGURE 11** OPERATION PANELSee Page  
2 - 21**FIGURE 12** ADF UPPERSee Page  
2 - 23

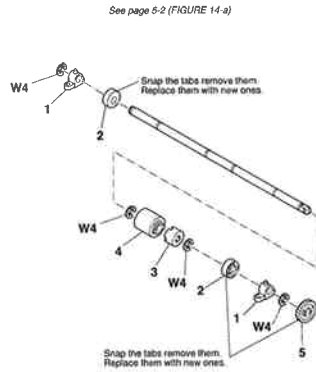
**FIGURE 13** SEPARATION ROLLER & FEED ROLLER

See Page  
2 - 25



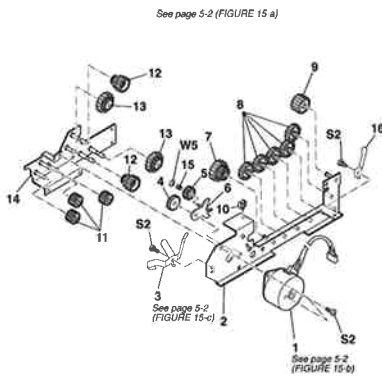
**FIGURE 14** PICKUP ROLLER

See Page  
2 - 27



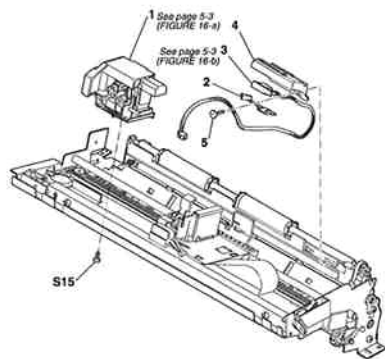
**FIGURE 15** DRIVE GEARS

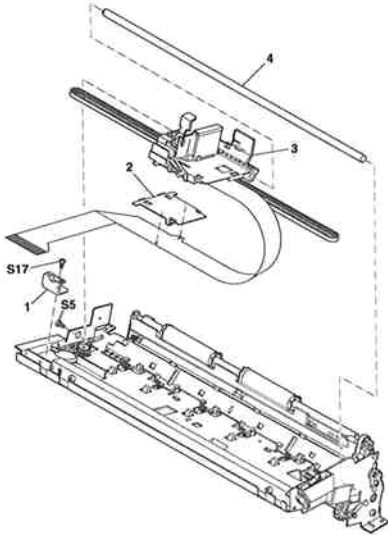
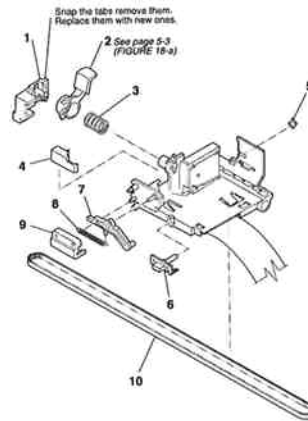
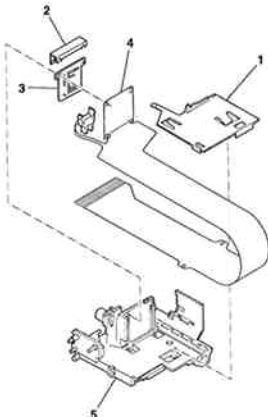
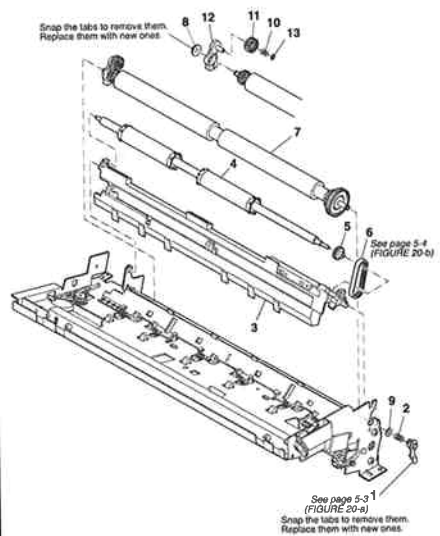
See Page  
2 - 29



**FIGURE 16** PRINTER (1)

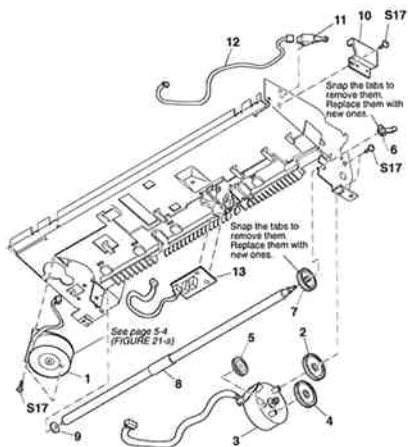
See Page  
2 - 31



**FIGURE 17** PRINTER (2)See Page  
2 - 33**FIGURE 18** CARRIAGE (1)See Page  
2 - 35**FIGURE 19** CARRIAGE (2)See Page  
2 - 37**FIGURE 20** PAPER FEED SECTION (1)See Page  
2 - 39

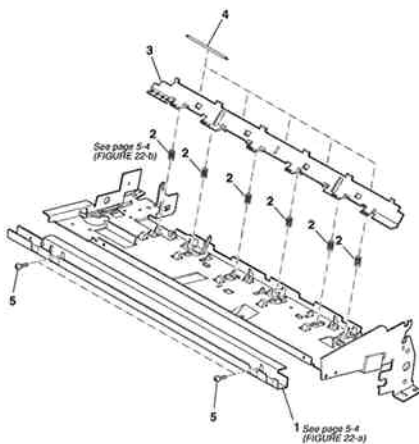
**FIGURE 21** PAPER FEED SECTION  
(2)

See Page  
2 - 41



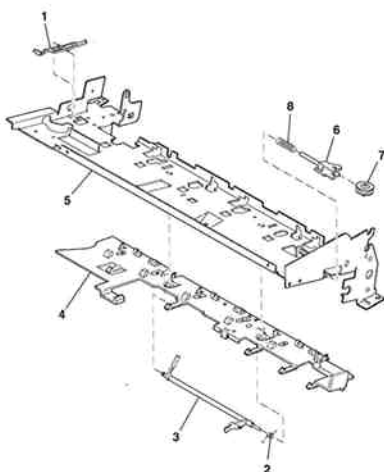
**FIGURE 22** CARRIAGE GUIDE & PRESSUER PLATE

See Page  
2 - 43



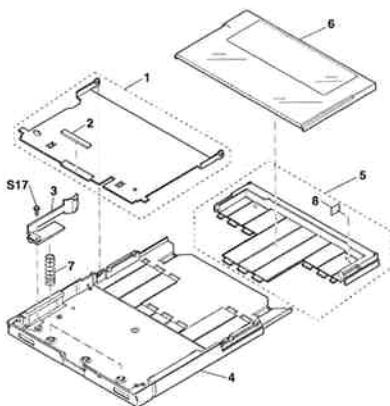
**FIGURE 23** PRINTER FRAME

See Page  
2 - 45



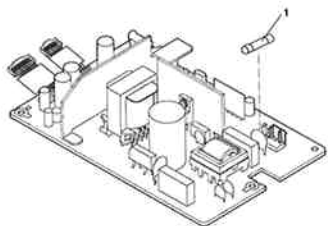
**FIGURE 24** RECORDING PAPER CASSETTE

See Page  
2 - 47



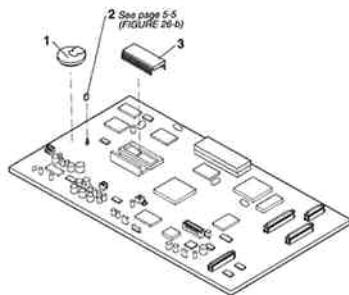
**FIGURE 25** FUSE, POWER SUPPLY

See Page  
2 - 49



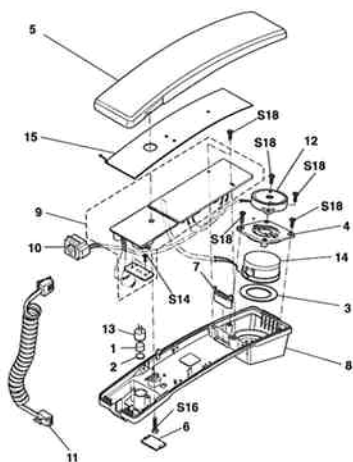
**FIGURE 26** SCNT BOARD ASS'Y

See Page  
2 - 51



**FIGURE 27** HANDSET

See Page  
2 - 53



**FIGURE 28** TOOL

See Page  
4 - 1



## 2. PARTS LAYOUT & PARTS LIST

FIGURE 1 PACKAGE CONTENTS

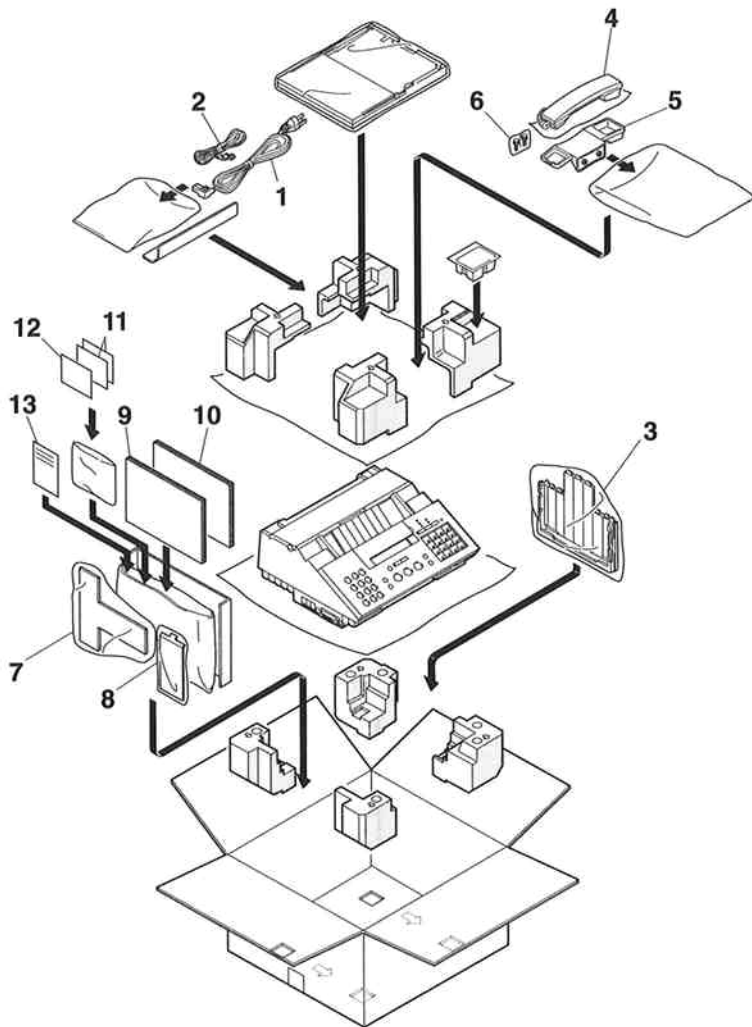
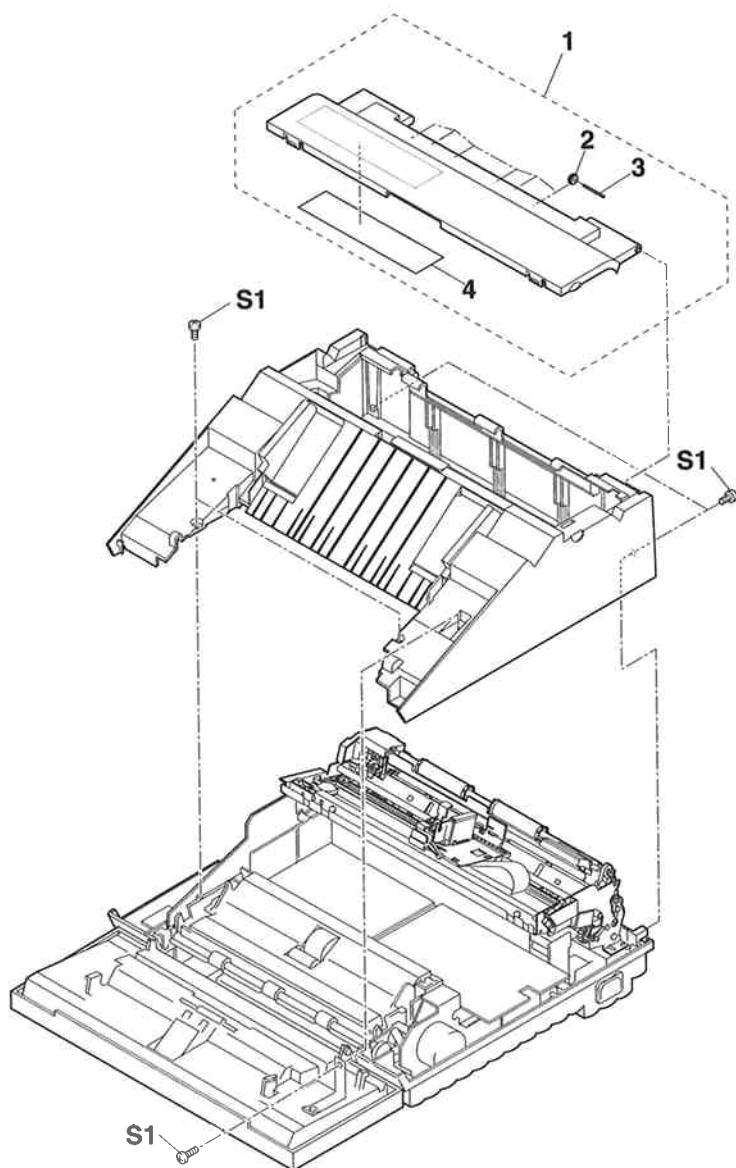


FIGURE & KEY No.	PART No.	R A N K	Q T Y	DESCRIPTION	REMARKS
1- 1	WT3-0057-000		1	POWER SUPPLY CORD 125V	
2	HH2-2292-000		1	MODULAR CORD, 6P (W)	
3	HF5-0030-000		1	LEGAL CASSETTE HOLDER UNIT	
4	HG1-2185-050		1	HANDSET ASS'Y (USA, AG)	
5	HA2-2128-000		1	HOLDER, HANDSET	
6	XA9-0718-000		2	SCREW, HANDSET HOLDER	
7	HB1-1010-000		1	TRAY, RECORDING PAPER	
8	HB1-0212-000		1	TRAY, DOCUMENT	
9	HT1-2029-000	N	1	INSTRUCTION BOOK (ENG)	
	HT1-3017-000	N	1	INSTRUCTION BOOK (FRENCH)	
10	HT1-2027-000	N	1	INSTRUCTION BOOK, PRINTER (ENG)	
	HT1-3020-000	N	1	INSTRUCTION BOOK, PRINTER (FRN)	
11	HB1-0280-000		2	SHEET, ONE TOUCH DIAL	
12	HB1-0281-000		1	COVER, SHEET	
13	HG1-4167-000		1	DRIVER SOFTWARE	

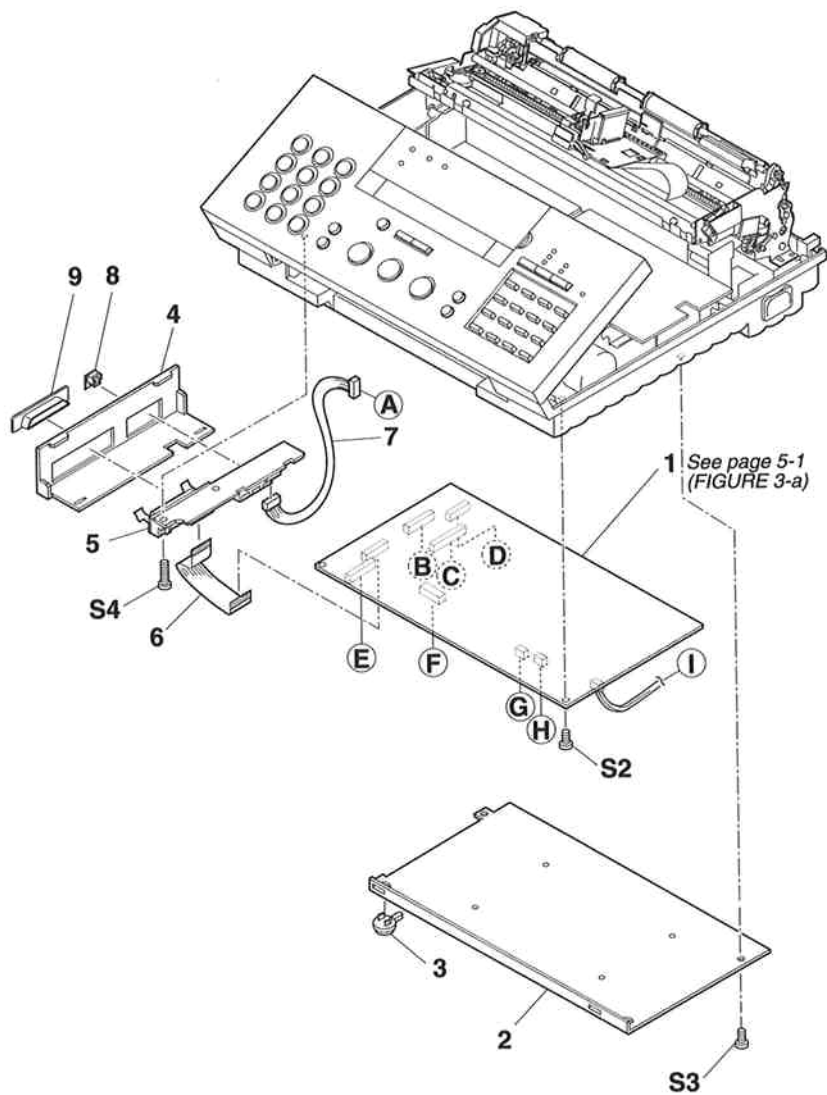


**FIGURE 2 UPPER COVER ASS'Y**



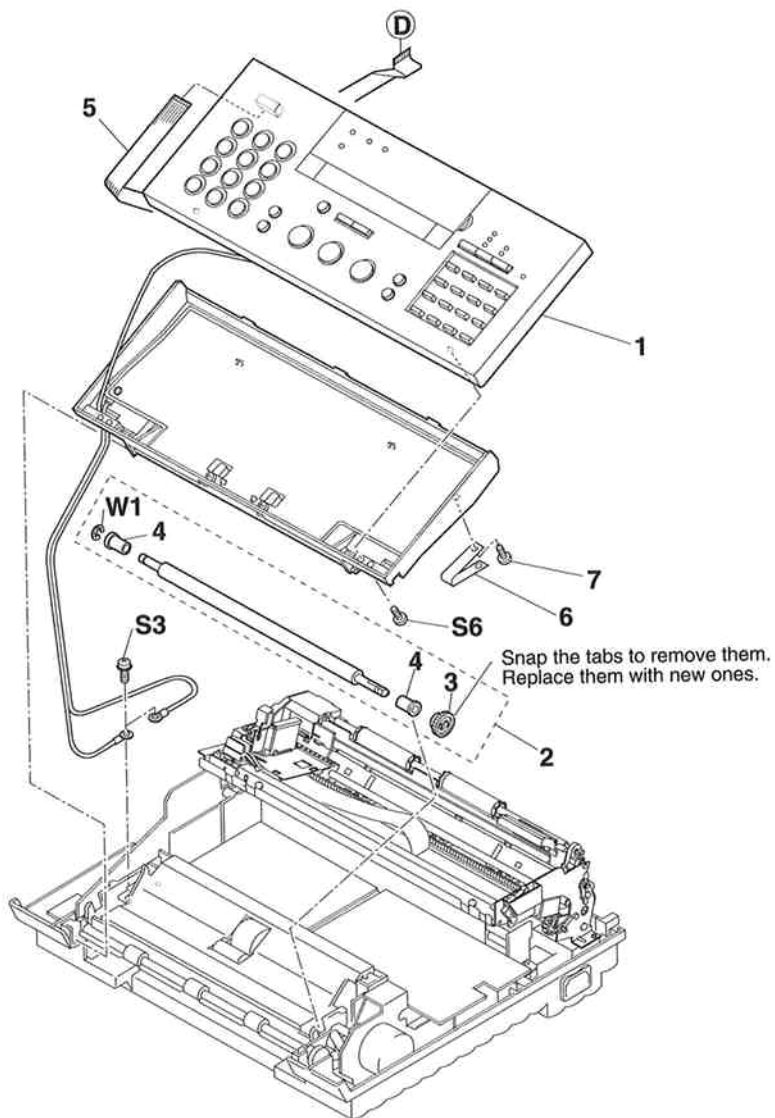


**FIGURE 3 SCNT & INTERFACE BOARD ASS'Y**



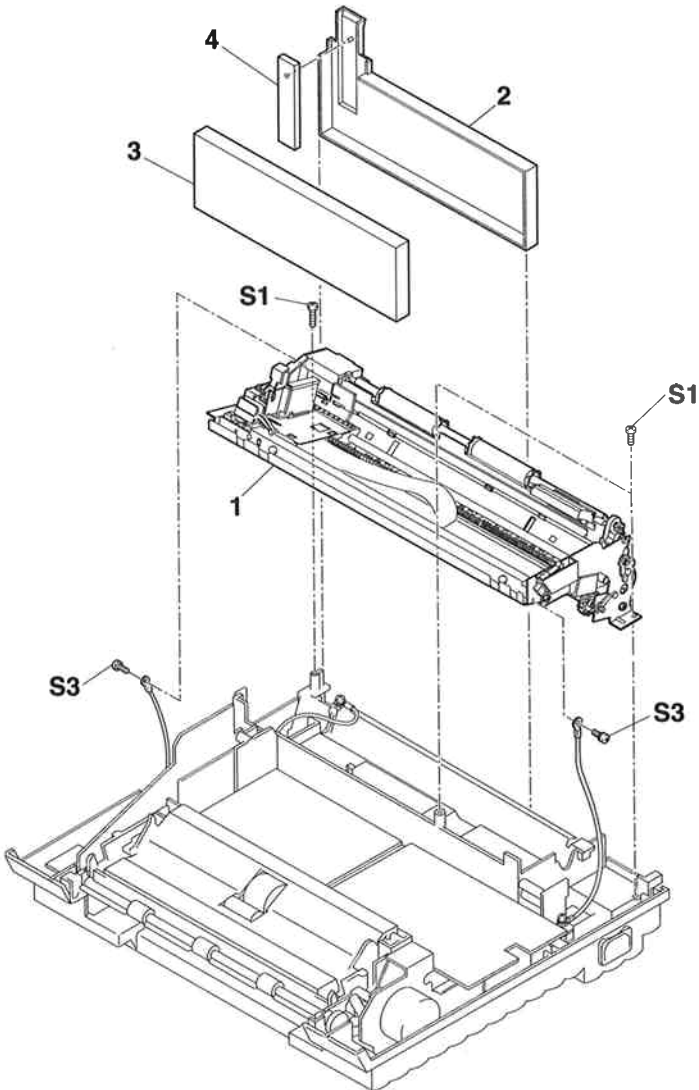


**FIGURE 4 OPERATION PANEL ASS'Y & ADF ASS'Y, UPPER**





**FIGURE 5 PRINTER ASS'Y**







**FIGURE 6 ADF, LOWER**

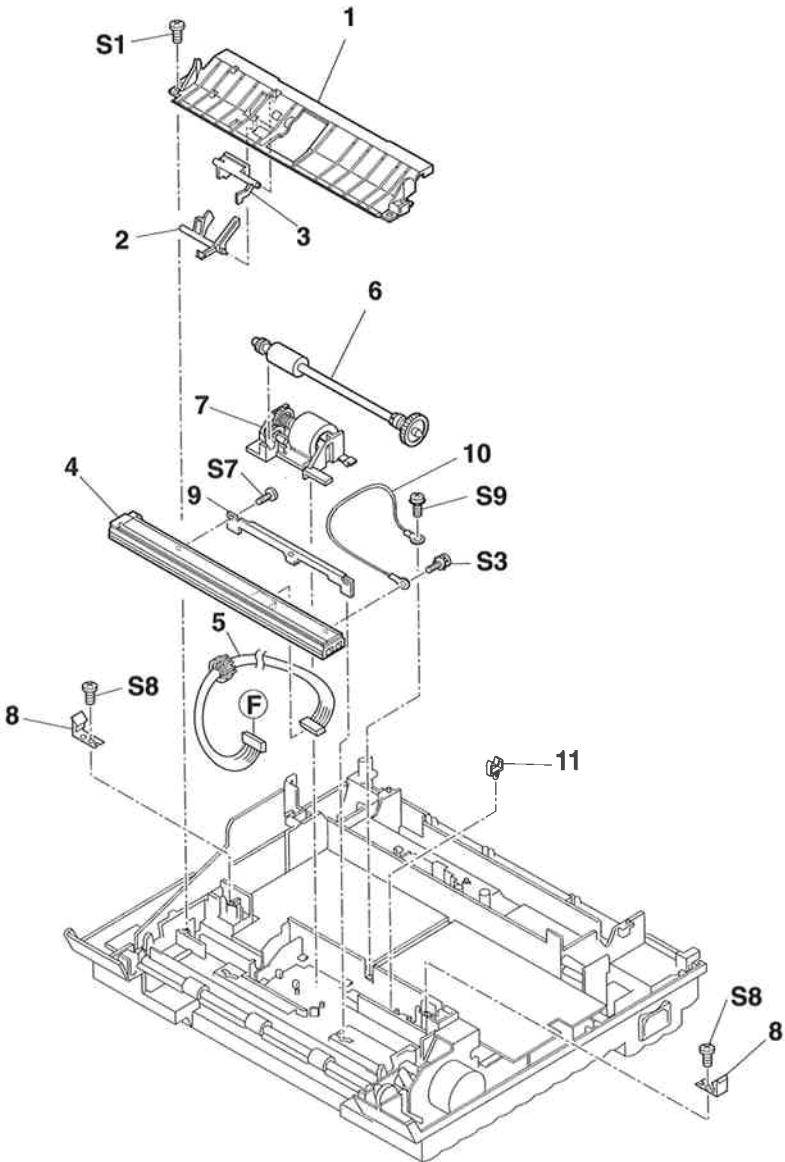


FIGURE & KEY No.	PART No.	RANK	QTY	DESCRIPTION	REMARKS
6- 1	HB1-0231-000		1	COVER, DOCUMENT GUIDE, LOWER	
2	HB1-0233-000		1	ARM, DETECTION	
3	HB1-0232-000		1	ARM, DETECTION	
4	HH7-2034-000		1	CONTACT SENSOR	
5	HH2-2351-000		1	CABLE WITH CONNECTER, 10P	
6	HG5-0063-000		1	FEED ROLLER ASS'Y	
7	HG5-0058-000		1	SEPARATION ROLLER ASS'Y	
8	HF1-0913-000		2	LOCK, OPERATION PANEL UNIT	
9	HB1-0230-000	N	1	PLATE, POSITIONING	
10	HH2-2344-000		1	CABLE WITH RING TONGUE	
11	WT2-0387-000		1	CLAMP	

**FIGURE 7 NCU & DRIVER BOARD ASS'Y, POWER SUPPLY**

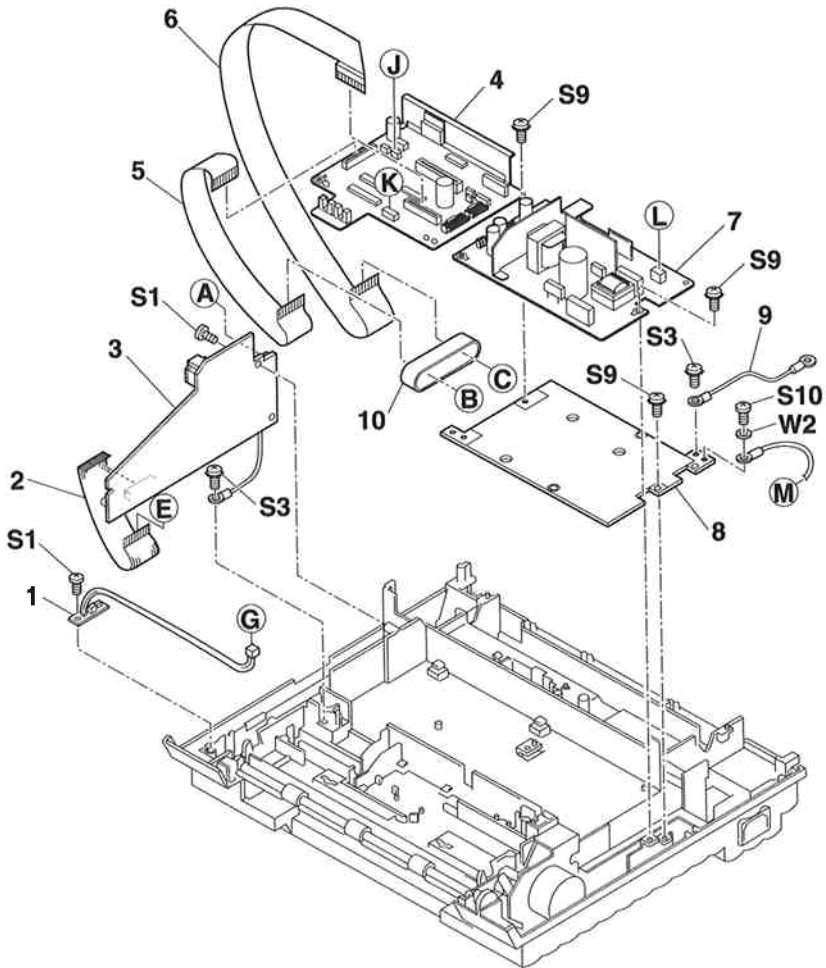


FIGURE & KEY No.	PART No.	R A N K	Q T Y	DESCRIPTION	REMARKS
7 - 1	HG1-4090-000		1	RELAY BOARD ASSY	
2	HH2-2348-000		1	FLAT CABLE	
3	HG1-4085-000		1	NCU BOARD ASS'Y	
4	HG1-4084-000		1	DRIVER BOARD ASS'Y	
5	HH2-2347-000		1	FLAT CABLE	
6	HH2-2346-000		1	FLAT CABLE	
7	HH3-5269-000		1	POWER SUPPLY UNIT	
8	HF5-0015-000	N	1	PLATE, GROUNDING	
9	HH2-2342-000		1	CABLE WITH RING TONGUE	
10	WE8-5131-000		1	FERRITE CORE SSC-40-10-F	

# FIGURE 8 RECORDING PAPER GUIDE

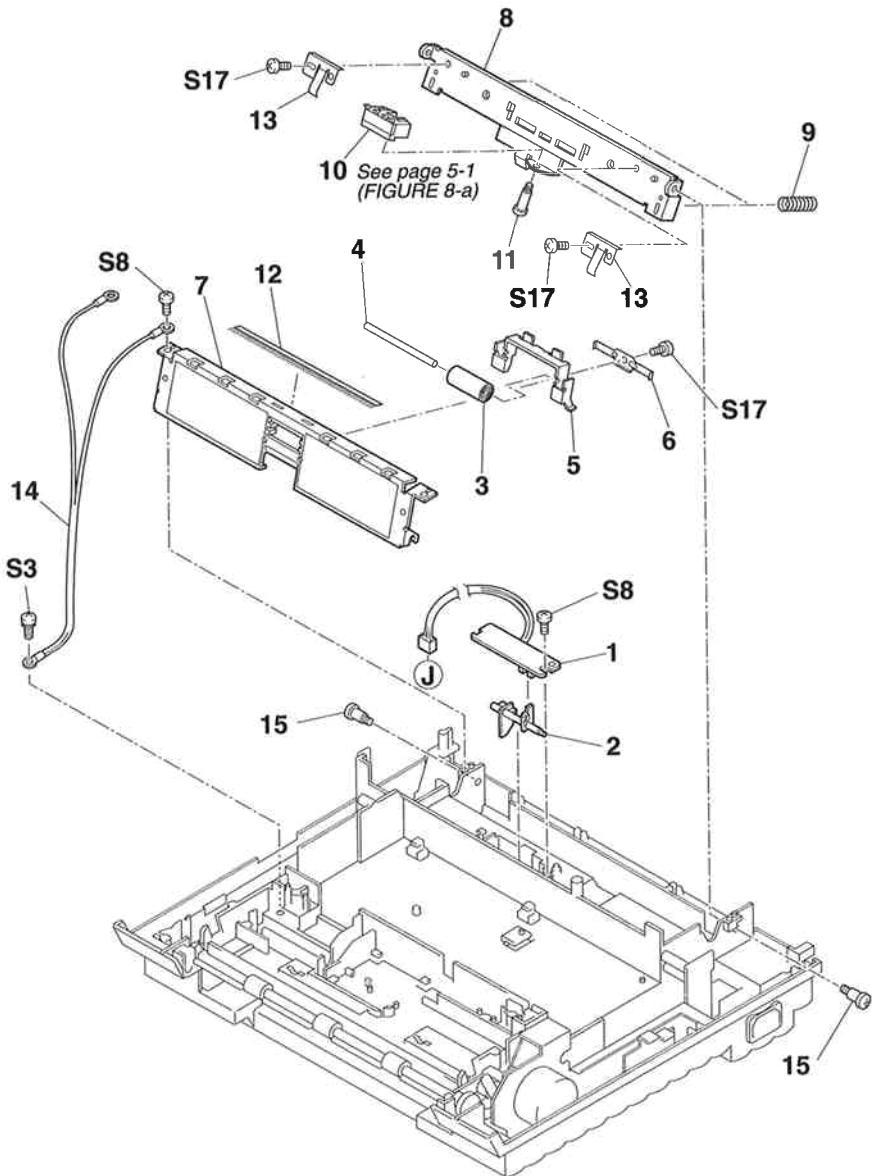


FIGURE & KEY No.	PART No.	R A N K	Q T Y	DESCRIPTION	REMARKS
8- 1	HG1-4087-000		1	SENSOR BOARD ASS'Y	
2	HB1-0224-000		1	ARM, DETECTION	
3	HA1-3064-000		1	ROLLER, BACK UP	
4	HA1-6221-000		1	SHAFT, BACK ROLLER A	
5	HB1-0250-000	N	1	BRACKET	
6	HB1-0248-000		1	SPRING, LEAF	
7	HF5-0028-000		1	PAPER GUIDE UNIT	
8	HB1-0254-000	N	1	PLATE, SEPARATION GUIDE	
9	HS5-2012-000		2	SPRING, COIL	
10	HF5-0017-000		1	LOCK, OPERATION PANEL UNIT	
11	RS1-9016-000		1	SCREW, STEPPED, M3	
12	HA1-6102-000		1	BRUSH, STATIC CHARGE	
13	HB1-0255-000		2	SPRING, LEAF GROUNDING	
14	HH2-2341-000		1	CABLE WITH RING TONGUE	
15	XA9-0289-000		2	SCREW M3 L7.2	

# FIGURE 9 MAIN FRAME

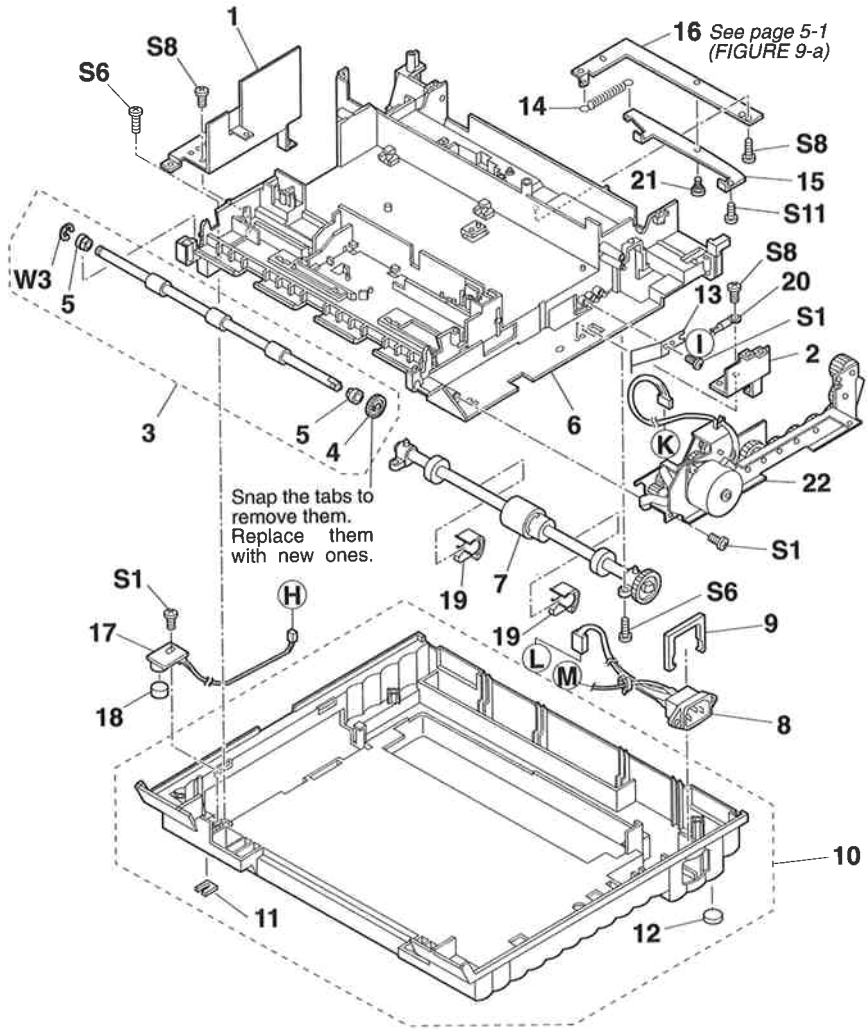


FIGURE & KEY No.	PART No.	R A N K	Q T Y	DESCRIPTION	REMARKS
9 - 1	HF5-0027-000	N	1	GROUNDING PLATE UNIT	
2	HB1-0220-000	N	1	PLATE, GROUNDING, RIGHT	
3	HG5-0057-000		1	EJECT ROLLER ASS'Y	
4	HS5-0024-000		1	GEAR, 21T	
5	HS1-1063-000		2	BUSHING	
6	HB1-0218-000	N	1	FRAME, MAIN	
7	HG5-0062-000		1	PICK-UP ROLLER ASS'Y	
8	HH2-2359-000		1	CABLE WITH INLET	
9	HB1-0216-000		1	PLATE, INLET STOP	
10	HF5-0016-000		1	LOWER COVER UNIT	
11	HB1-0317-000		1	FOOT, RUBBER	
12	HA1-3935-000		2	RUBBER PAD	
13	HB1-0219-000		1	PLATE, CASSETE PRESS	
14	HS5-2030-000		1	SPRING, COIL	
15	HB1-0225-000		1	PLATE, PAPER RELEASE	
16	HB1-0226-000		1	PLATE, PAPER RELEASE	
17	HG1-4089-000		1	MICROPHONE BOARD ASS'Y	
18	HB1-0318-000		1	FILTER, MECHANICAL	
19	HB1-1003-000		2	GUIDE, PAPER PICKUP	
20	HH2-2414-000		1	CABLE WITH CONNECTOR	
21	HS1-9004-000		1	SCREW M3X4	
22	NPN		1	DRIVE ASS'Y	



**FIGURE 10 UPPER COVER**

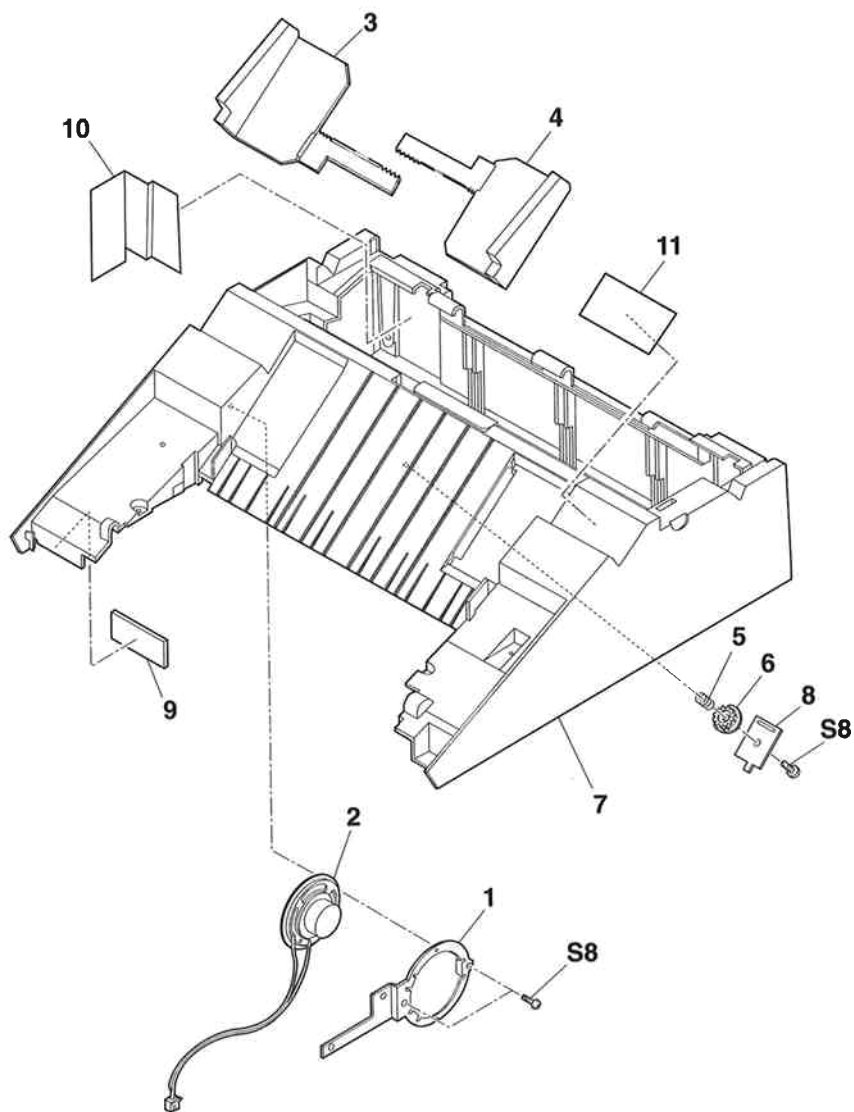


FIGURE & KEY No.	PART No.	R A N K	Q T Y	DESCRIPTION	REMARKS
10- 1	HB1-0311-000	N	1	PLATE, SPEAKER MOUNTING	
2	HH7-2038-000		1	SPEAKER	
3	HB1-0313-000		1	GUIDE, DOCUMENT, LEFT	
4	HB1-0314-000		1	GUIDE, DOCUMENT, RIGHT	
5	HS1-2143-000		1	SPRING STAINLESS	
6	HS1-0253-000		1	GEAR, 16T (POM)	
7	HB1-0310-000		1	COVER, UPPER	
8	HB1-1002-000		1	PLATE, PRESSURE	
9	HB1-1008-000		1	PAD, FORM RUBBER	
10	HB1-1030-000		1	INK ABSORBAR	
11	HB1-1031-000		1	LABEL, RECORDING PAPER CAUTION	

**FIGURE 11 OPERATION PANEL**

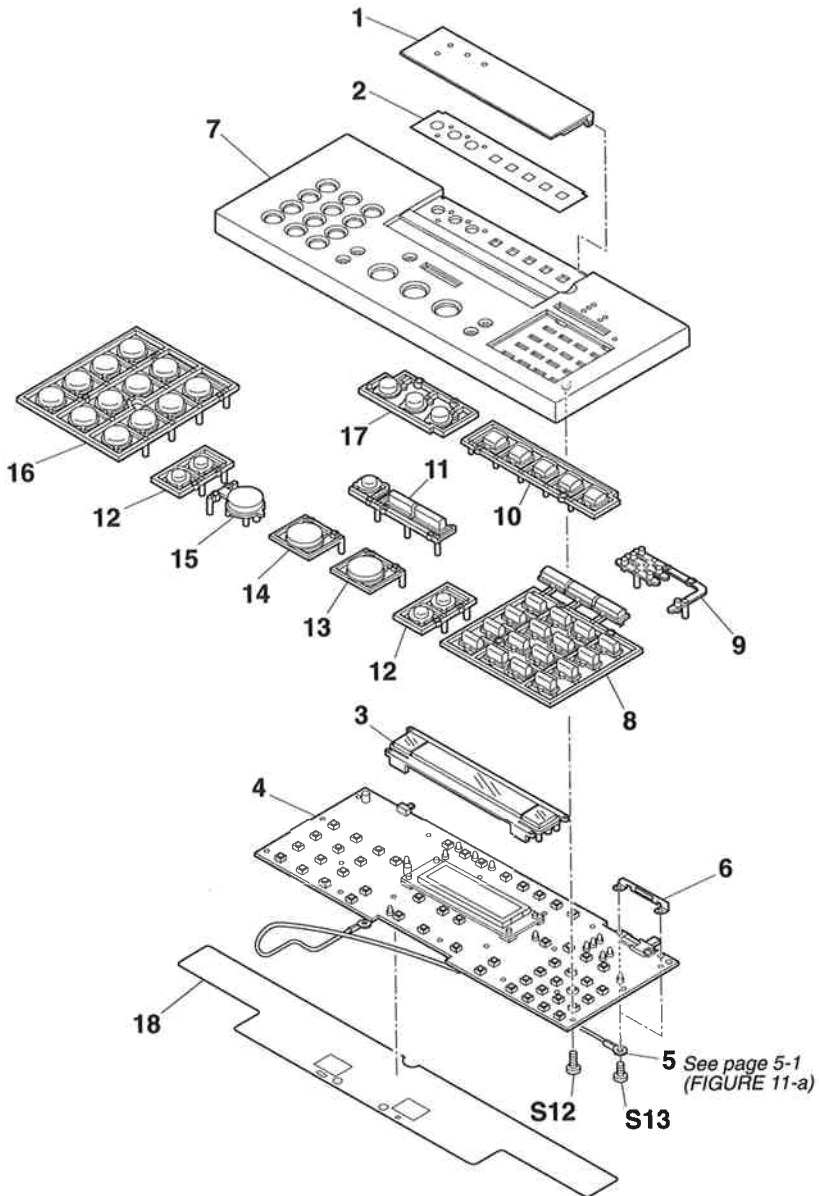


FIGURE & KEY No.	PART No.	R A N K	Q T Y	DESCRIPTION	REMARKS
11- 1	HB1-0283-000		1	COVER, BUTTON	
2	HB1-0279-000		1	SHEET, OPERATION	
3	HB1-0278-000		1	COVER, DISPLAY	
4	HG1-4086-000		1	OPCNT BOARD ASS'Y	
5	HH2-2345-000		1	CABLE WITH RING TONGUE	
6	HB1-0290-000		1	PLATE, GROUNDING	
7	HB1-0268-000		1	COVER, PANEL	
8	HB1-0272-000		1	KEY TOP, "ONE TOUCH DIAL"	
9	HB1-0277-000		1	COVER, LED	
10	HB1-0276-000		1	KEY TOP, "ANSWERING"	
11	HB1-0273-000		1	KEY TOP, "SEARCH"	
12	HB1-0274-000		2	KEY TOP, "FUNCTION"	
13	HB1-0269-000		1	KEY TOP, "START"	
14	HB1-0282-000		1	KEY TOP, "STOP"	
15	HB1-0270-000		1	KEY TOP, "HANDS FREE"	
16	HB1-0271-000		1	KEY TOP, "DIAL"	
17	HB1-0275-000		1	KEY TOP, "PRINTER"	
18	HB1-1007-000		1	SHEET, OPCNT INSULATOR	

FIGURE 12 ADF UPPER

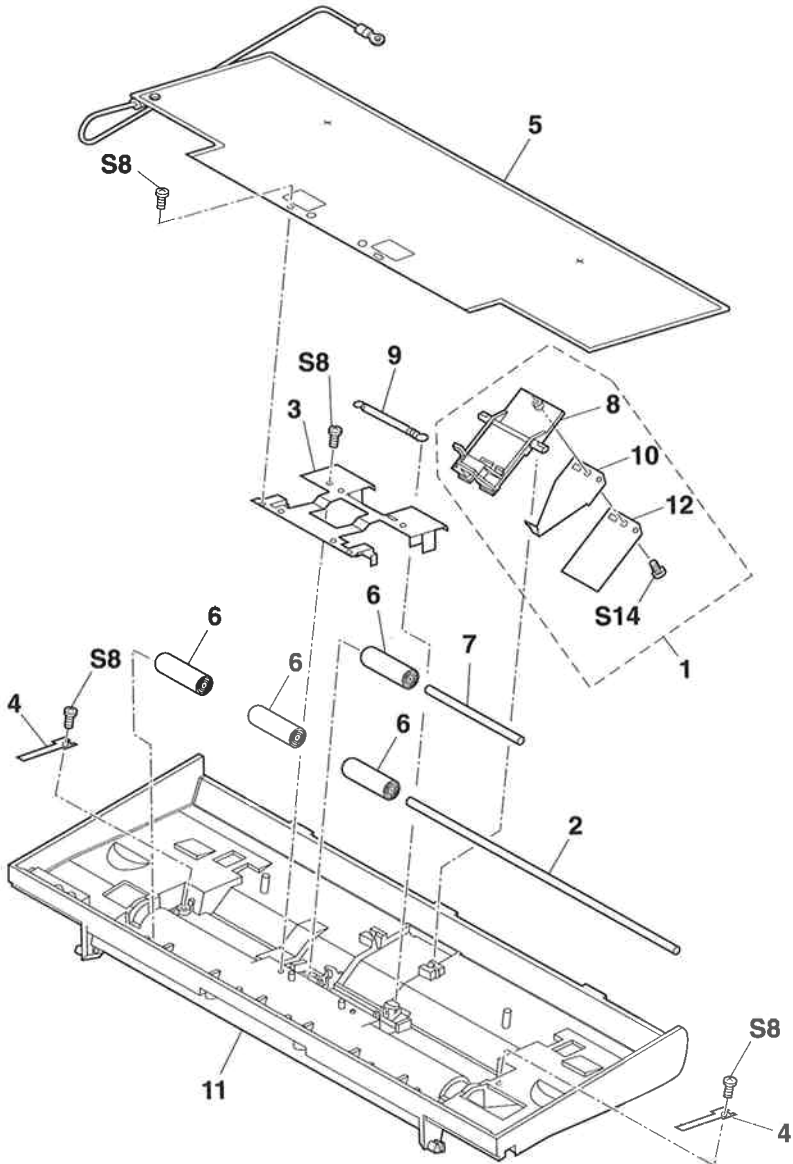


FIGURE & KEY No.	PART No.	RANK	QTY	DESCRIPTION	REMARKS
12- 1	HG5-0067-000		1	SEPARATION GUIDE ASS'Y	
2	HA1-6280-000		1	SHAFT, BACK UP ROLLER B (B4)	
3	HB1-0260-000		1	PLATE, PRESSURE	
4	HB1-0261-000		2	PLATE, PRESSURE	
5	HB1-0263-000		1	SHEET WITH CABLE, GROUNDING	
6	HA1-3064-000		4	ROLLER, BACK UP	
7	HA1-3066-000		1	SHAFT, BACK UP ROLLER B	
8	HF5-0014-000		1	SEPARATION GUIDE UNIT	
9	HS5-2013-000		1	SPRING, COIL	
10	HB1-0266-000		1	SPRING, LEAF, GUIDE	
11	HB1-0259-000		1	COVER, DOCUMENT GUIDE, UPPER	
12	HB1-0267-000		1	SHEET, SEPARATION GUIDE	

**FIGURE 13 SEPARATION ROLLER & FEED ROLLER**

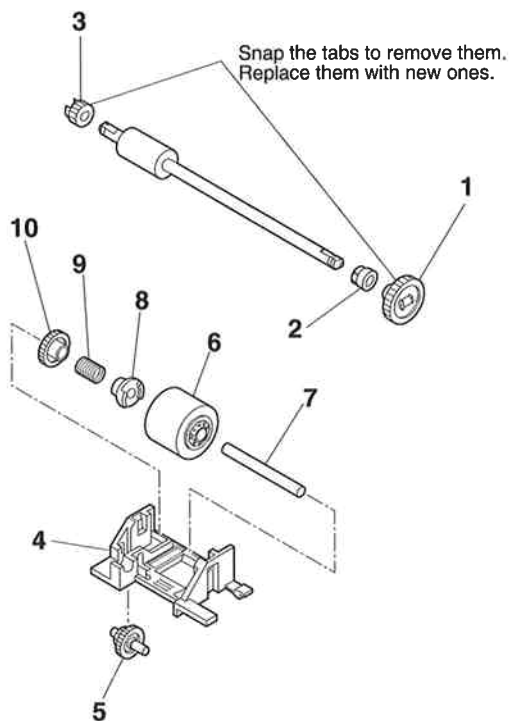


FIGURE & KEY No.	PART No.	RANK	QTY	DESCRIPTION	REMARKS
13- 1	HS1-0283-000		1	GEAR, 28T	
2	HS1-1063-000		1	BUSHING	
3	HS5-0023-000		1	GEAR, 21T	
4	HB1-0237-000		1	HOLDER, SEPARATION ROLLER	
5	HS5-0039-000		1	GEAR, STEPPED	
6	HB1-0235-000		1	ROLLER, SEPARATION	
7	HB1-0236-000		1	SHAFT, SEPARATION ROLLER	
8	HB1-0238-000		1	SPACER	
9	HS5-2027-000		1	SPRING, CLUCH	
10	HS5-0040-000		1	GEAR, 35T	



## FIGURE 14 PICKUP ROLLER

See page 5-2 (FIGURE 14-a)

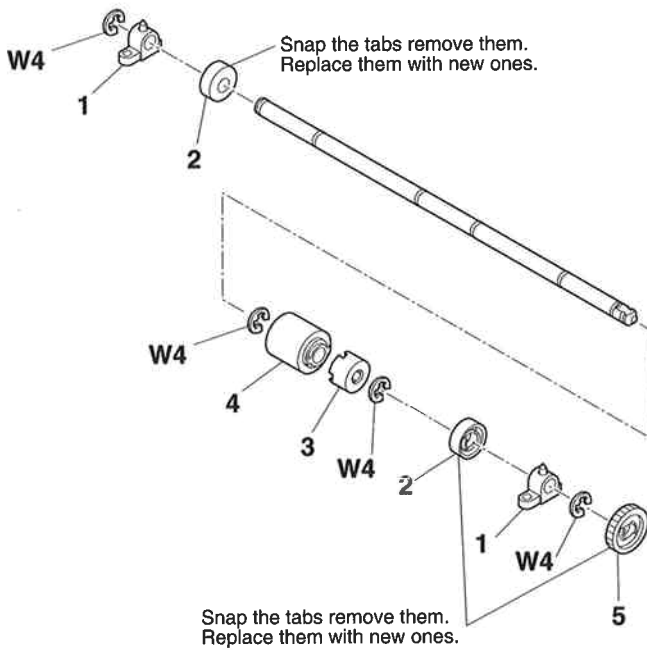


FIGURE & KEY No.	PART No.	R A N K	Q T Y	DESCRIPTION	REMARKS
14- 1	RS1-1013-000		2	BUSHING	
2	HB1-0258-000		2	ROLLER, SPACER	
3	HB1-0251-000		1	CLUTCH	
4	HB1-0256-000		1	ROLLER, PICKUP	
5	HS5-0033-000		1	GEAR, 31T	
-----					
-----					
-----					
-----					
-----					
-----					
-----					
-----					
-----					

# FIGURE 15 DRIVE GEARS

See page 5-2 (FIGURE 15-a)

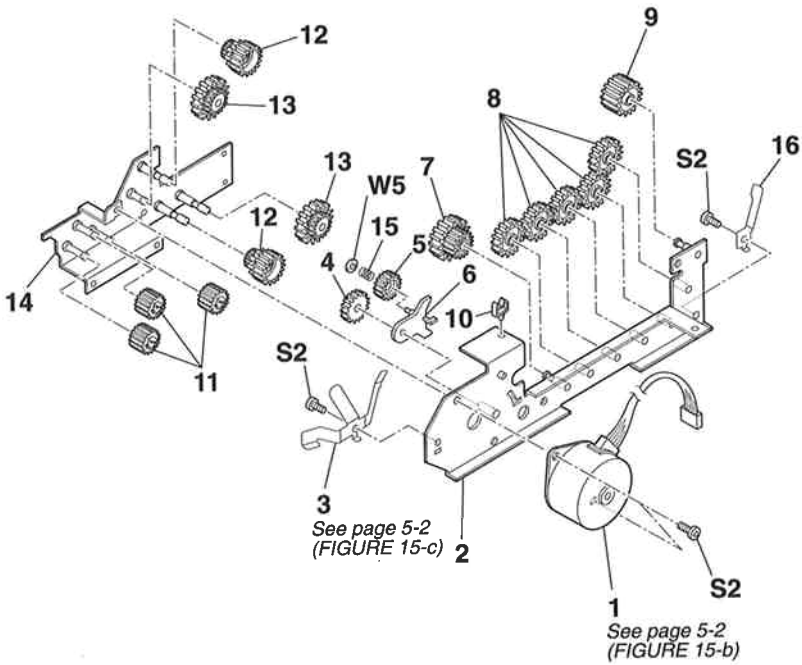


FIGURE & KEY No.	PART No.	R A N K	Q T Y	DESCRIPTION	REMARKS
15- 1	HH7-2037-000		1	PULSE MOTOR, READER	
2	HF5-0013-000	N	1	PLATE, GEAR SHAFT, RIGHT	
3	HB1-0247-000		1	PLATE, GROUNDING	
4	HS5-0027-000		1	GEAR, 36T	
5	HS5-0028-000		1	GEAR, 24T	
6	HB1-0246-000		1	ARM, TRANSMISSION	
7	HS5-0032-000		1	GEAR, STEPPED	
8	HS5-0030-000		5	GEAR, 26T	
9	HS5-0031-000		1	GEAR, 23T	
10	WT2-0434-000		1	CLIP	
11	HS5-0029-000		3	GEAR, 16T	
12	HS5-0026-000		2	GEAR, STEPPED	
13	HS5-0025-000		2	GEAR, STEPPED	
14	HF5-0012-000	N	1	PLATE, GEAR SHAFT, LEFT	
15	HS5-2011-000		1	SPRING, COIL	
16	HB1-0292-000		1	PLATE, GROUNDING	

**FIGURE 16 PRINTER (1)**

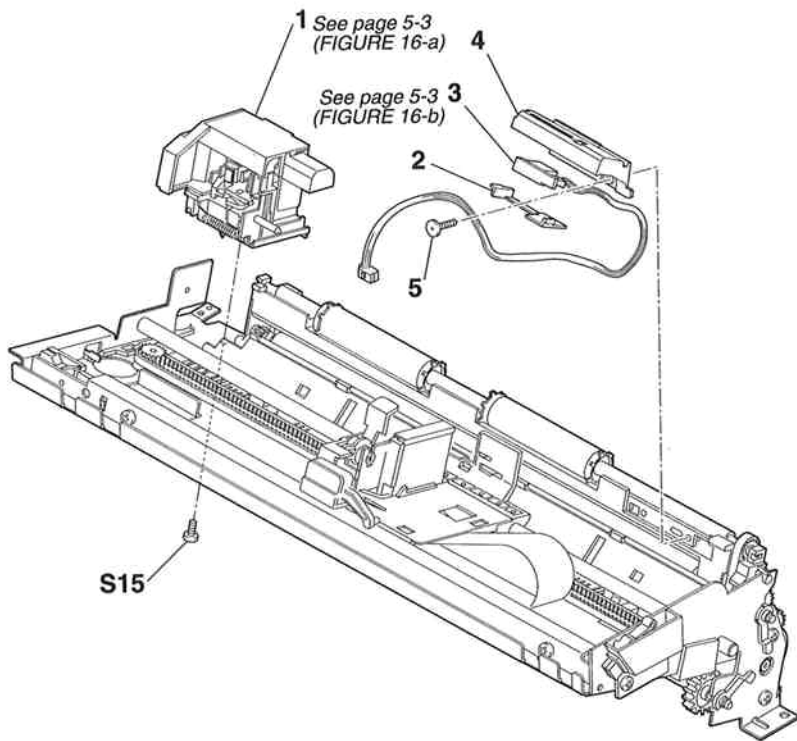


FIGURE & KEY No.	PART No.	R A N K	Q T Y	DESCRIPTION	REMARKS
16 - 1	HG5-0072-000		1	PURGE UNIT	
2	HB1-0300-000		1	COVER, FOOTER SENSOR	
3	HG1-4108-000		1	SENSOR BOARD ASS'Y	
4	HB1-0245-000		1	HOLDER, FOOTER SENSOR	
5	XA9-0318-000		1	SCREW, TAP, PH2.6X8	

**FIGURE 17 PRINTER (2)**

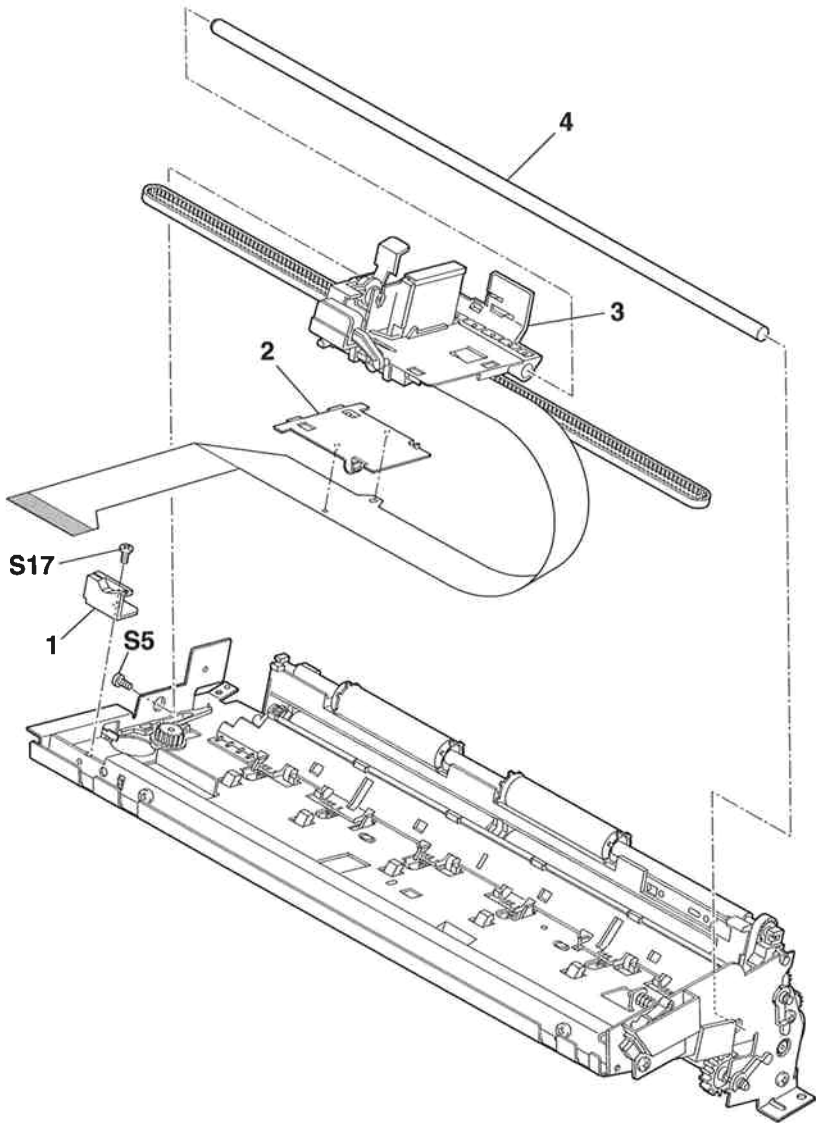


FIGURE & KEY No.	PART No.	R A N K	Q T Y	DESCRIPTION	REMARKS
17- 1	HB1-0286-000		1	GUIDE, CORNER	
2	HB1-0105-000		1	HOLDER, CARRIAGE RIBBON CABLE	
3	HGS-0153-000		1	CARRIAGE UNIT	
4	HB1-0284-000	N	1	SHAFT, CARRIAGE	



# FIGURE 18 CARRIAGE (1)

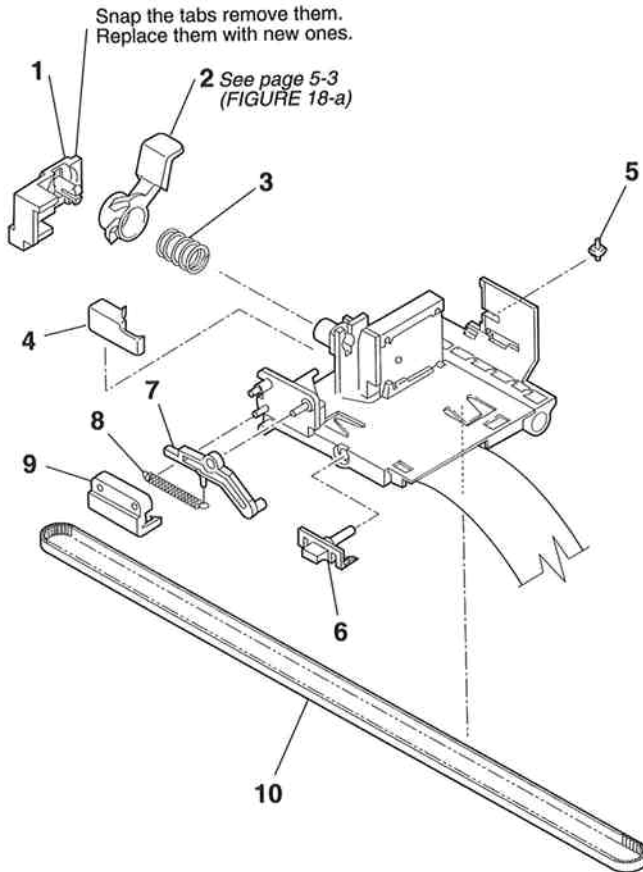


FIGURE & KEY No.	PART No.	R A N K	Q T Y	DESCRIPTION	REMARKS
18 - 1	QB1-0440-000		1	COVER, HOOK	
2	QB1-0437-000		1	LEVER, HOOKING	
3	QB1-0439-000		1	SPRING, COIL	
4	QB1-0438-000		1	HOOK, CARRIAGE	
5	QB1-0443-000		1	WHEEL, CARRIAGE	
6	HB1-0116-000		1	PIN, CARRIAGE	
7	HB1-0117-000		1	ARM, CARRIAGE	
8	HS5-2015-000		1	SPRING, HOOK AND COIL	
9	HB1-0115-000		1	COVER, CARRIAGE TOP	
10	QB1-0434-000		1	BELT, CARRIAGE	

**FIGURE 19 CARRIAGE (2)**

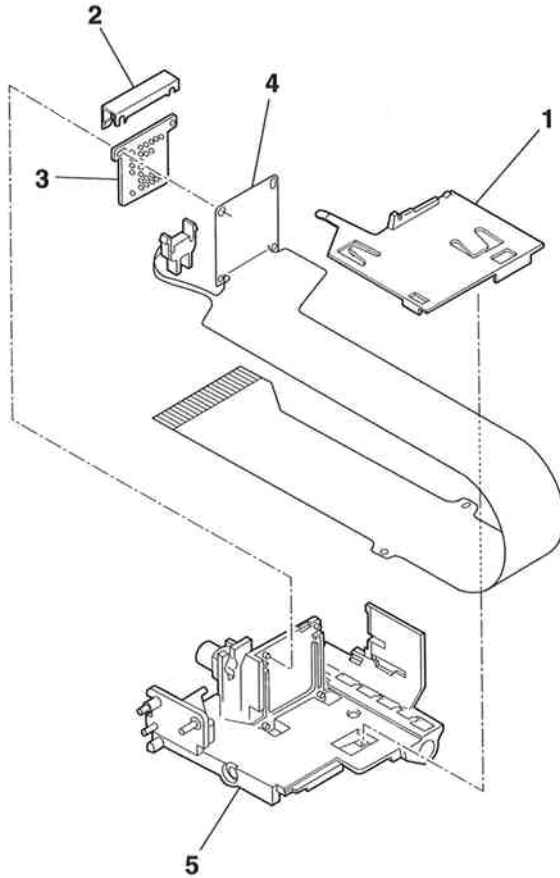


FIGURE & KEY No.	PART No.	R A N K	Q T Y	DESCRIPTION	REMARKS
19- 1	HB1-0114-000		1	GUIDE, RIBBON CABLE	
2	QB1-0441-000		1	HOLDER, RIBBON CABLE (UPPER)	
3	QB1-0436-000		1	PAD, CONTACT	
4	HG1-4095-000		1	CARRIAGE RIBON CABLE ASS'Y	
5	HB1-0113-000		1	BASE, CARRIAGE	

**FIGURE 20 PAPER FEED SECTION (1)**

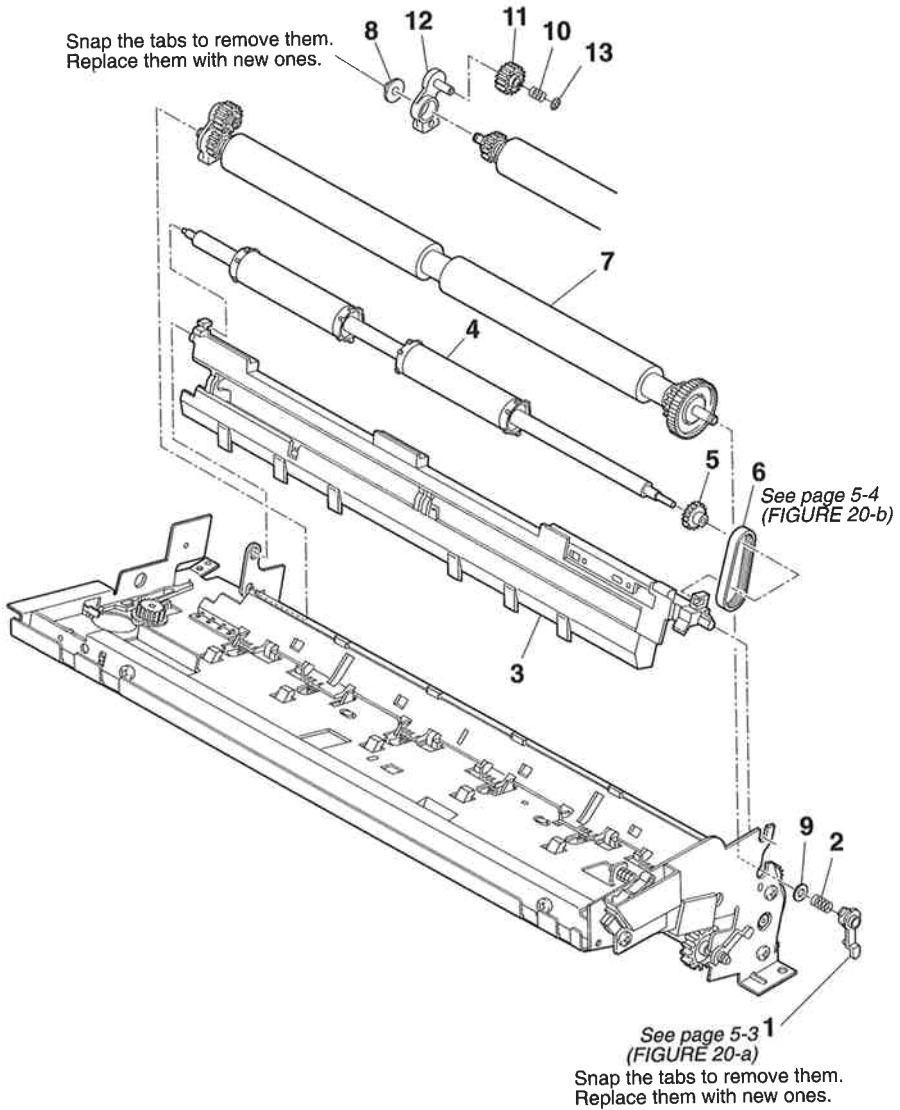


FIGURE & KEY No.	PART No.	R A N K	Q T Y	DESCRIPTION	REMARKS
20 - 1	QB1-0417-000		1	BUSHING	
2	QB1-0423-000		1	SPRING, COIL	
3	HB1-0301-000		1	PLATEN	
4	HB1-0299-000		1	ROLLER, PAPER EJECT	
5	HS5-3004-000		1	PULLY	
6	XF9-0485-000		1	BELT, TRANSMISSION	
7	HG5-0075-000		1	PAPER FEED ROLLER ASSY	
8	QB1-0422-000		1	BUSHING	
9	QB1-0622-000		1	WASHER, PLAIN	
10	QB1-0421-000		1	SPRING, COIL	
11	QB1-0425-000		1	GEAR, TRANSMISSION	
12	QB1-0420-000		1	ARM, TRANSMISSION	
13	XA9-0613-000		1	NUT, SUS	

**FIGURE 21 PAPER FEED SECTION (2)**

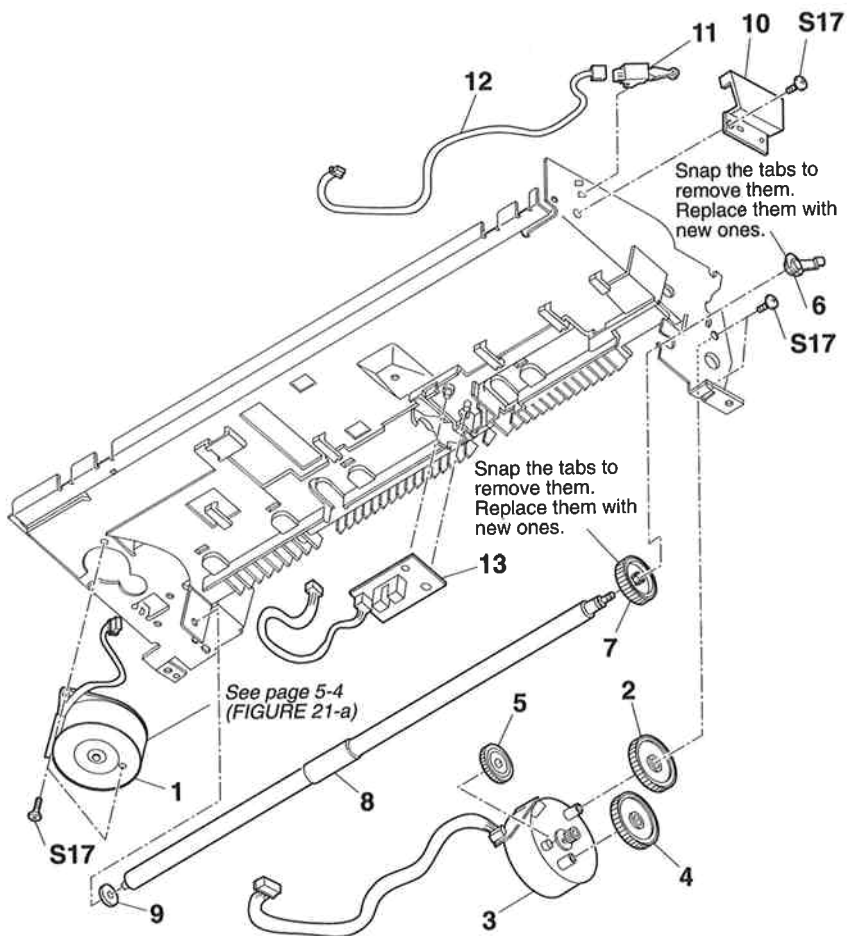
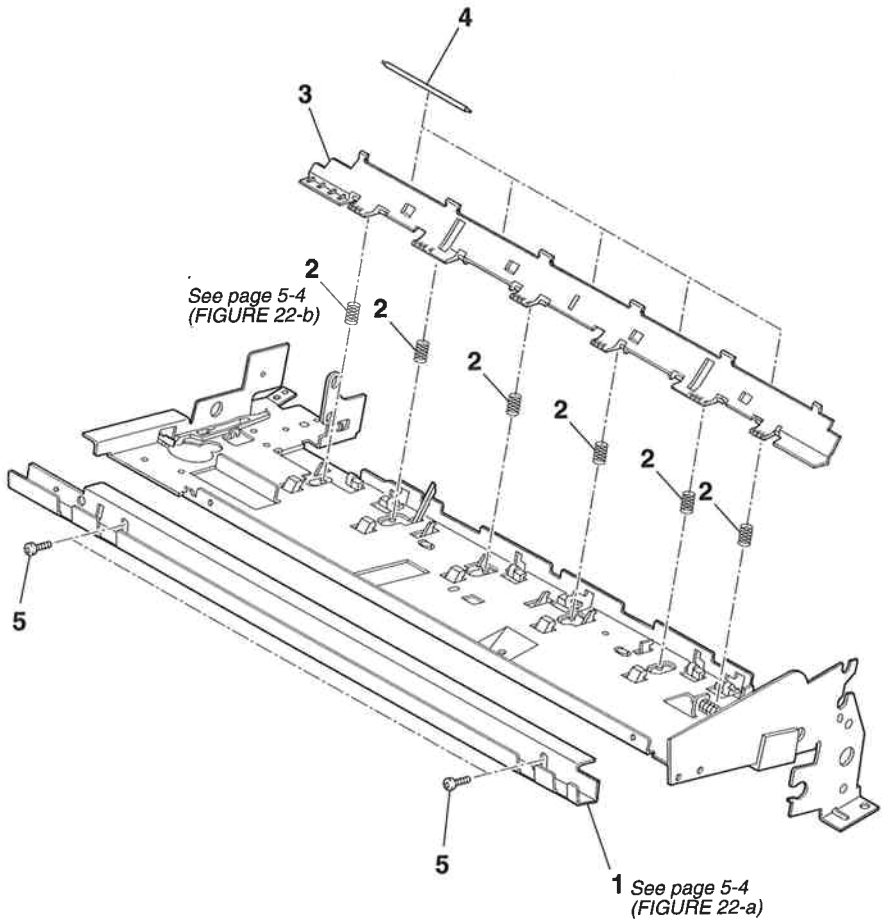


FIGURE & KEY No.	PART No.	R A N K	Q T Y	DESCRIPTION	REMARKS
21- 1	QH4-4038-000		1	MOTOR, CARRIAGE	
2	QB1-0500-000		1	GEAR, SLOW DOWN	
3	HH7-2036-000		1	MOTOR, PAPER FEED	
4	HS5-0034-000		1	GEAR, STEPPED	
5	HS5-0036-000		1	GEAR, IDLER	
6	QB1-0417-000		1	BUSHING	
7	HS5-0035-000		1	GEAR, 24T	
8	HB1-0287-000		1	ROLLER, PAPER FEED	
9	QB1-0422-000		1	BUSHING	
10	HB1-0372-000		1	COVER, SENSOR	
11	WC4-5052-000		1	MICRO SWITCH	
12	HH2-2358-000		1	CABLE WITH CONNECTOR, 2P	
13	HG1-4088-000		1	SENSOR BOARD ASSY	

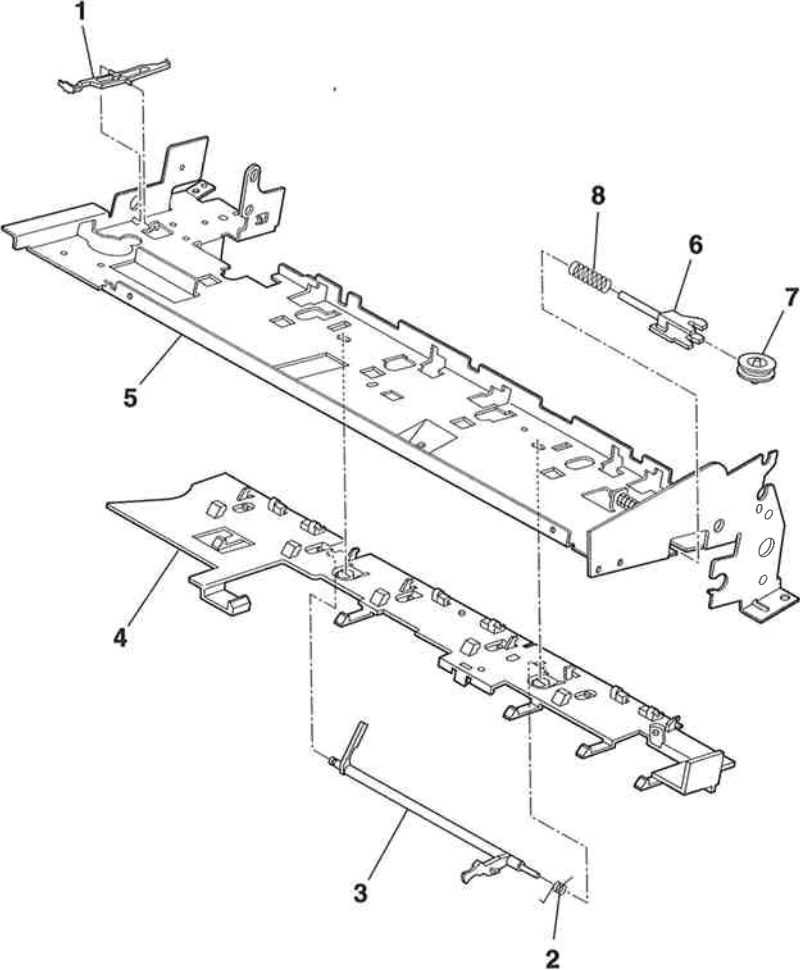


**FIGURE 22 CARRIAGE GUIDE & PRESSUER PLATE**



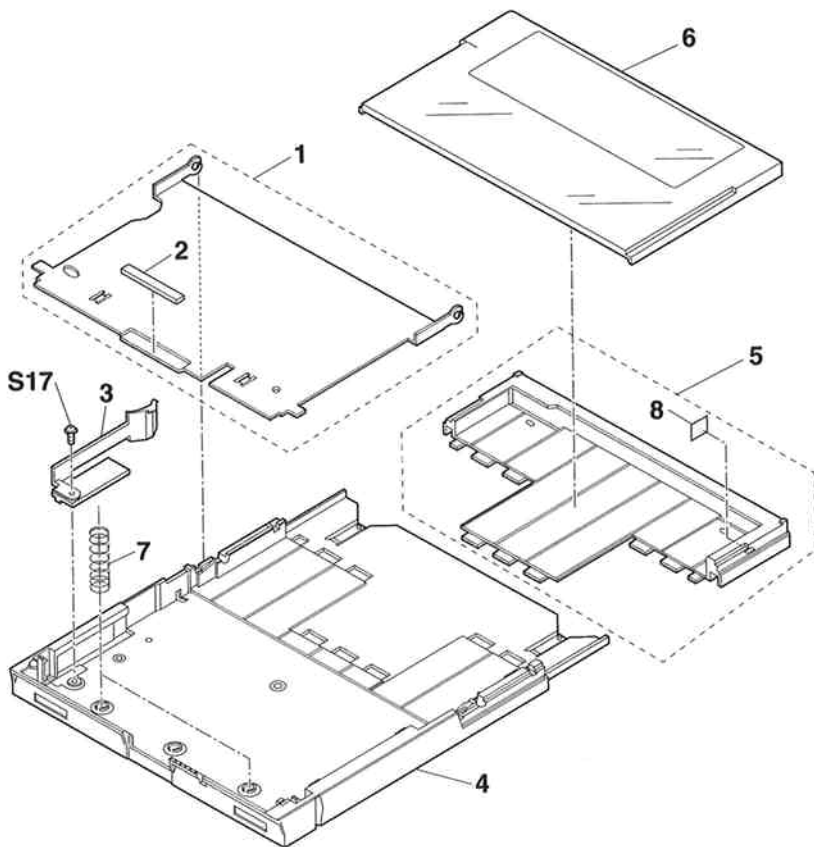


**FIGURE 23** PRINTER FRAME



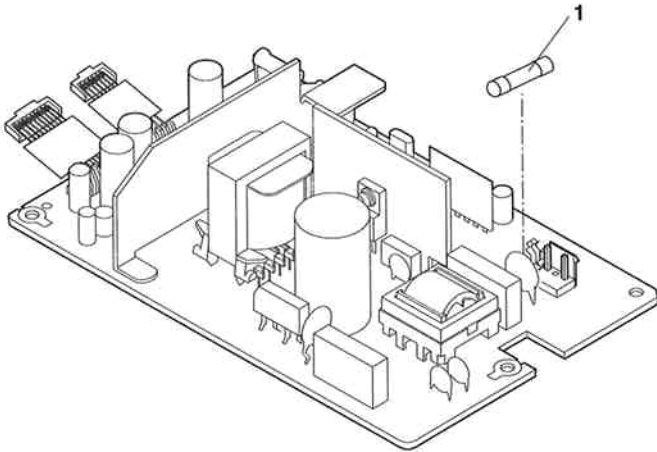


**FIGURE 24 RECORDING PAPER CASSETTE**





**FIGURE 25 FUSE, POWER SUPPLY**







**FIGURE 26 SCNT BOARD ASS'Y**

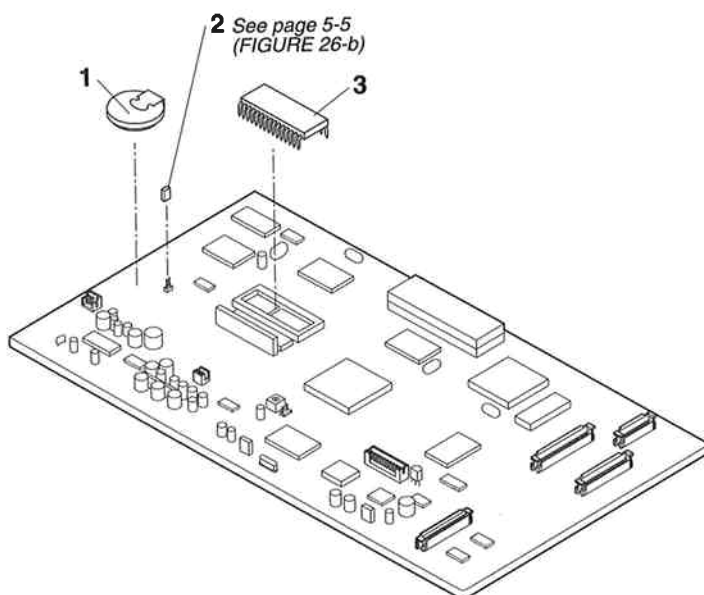


FIGURE & KEY No.	PART No.	R A N K	Q T Y	DESCRIPTION	REMARKS
26 - 1	WK1-5047-000		1	LITHIUM BATTERY, CR2450HC22N	
2	WS1-0172-000		1	PLUG, SHORT	
3	HH4-2468-000		1	IC, AM27C040-150DC, EP-ROM <1>	

**FIGURE 27 HANDSET**

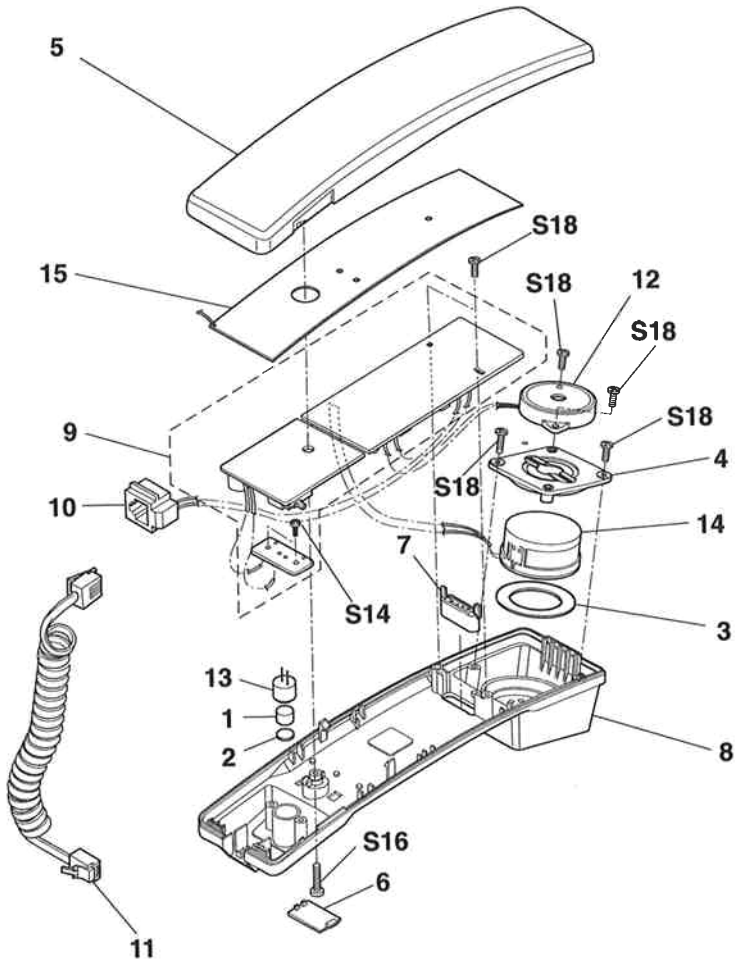


FIGURE & KEY No.	PART No.	RANK	QTY	DESCRIPTION	REMARKS
27 - 1	HA1-3001-000		1	FILTER, MECHANICAL	
2	HA1-3002-000		1	FILTER B, MECHANICAL	
3	HA1-3185-000		1	SEAL, RUBBER	
4	HA1-4279-000		1	HOLDER, SPEAKER	
5	HA1-6141-000		1	COVER, UPPER (AG)	
6	HA1-6143-000		1	COVER, SCREW (AG)	
7	HA1-6144-000		1	KEY TOP F (AG)	
8	HA1-6142-000		1	COVER, LOWER (AG)	
9	HG1-2196-000		1	TELCNT BOARD ASS'Y	
10	HH2-1277-000		1	MODULAR JACK	
11	HH2-1703-000		1	CORD, COILED (A.G.)	
12	HH7-1299-000		1	RINGER PKM34EW-12	
13	WR1-0086-000		1	MICROPHONE	
14	WR1-0111-000		1	SPEAKER DH-70C	
15	HA1-5412-000		1	PLATE, NOISE SHIELD (CT-15)	

# 3. SCREWS & WASHERS LIST

## SCREWS

FIGURE & KEY No.	PART No.	RANK	QTY	DESCRIPTION	REMARKS
S- 1	XB4-7300-807		18	SCREW, TAP TIGHT, BINDING HEAD	
2	XB1-2300-607		6	SCREW, BH3X6(S)	
3	XB2-7300-607		11	SCREW, M3X6	
4	XB1-1301-007		2	SCREW, PH3X10	
5	XB5-6300-605		1	SCREW, TP, PH3X6	
6	XB4-7301-007		4	SCREW, TAP TIGHT BHM3X10	
7	XA1-7260-407		2	SCREW, PH2.6X4	
8	XB4-7300-809		23	SCREW, TAP, BINDING HEAD, M3X8	
9	XB2-7301-007		5	SCREW WITH WASHER, PH3X10	
10	XB1-2400-603		1	SCREW, MACHINE M4X6	
11	XB1-2300-809		1	SCREW, BH3X8	
12	XB4-7200-805		18	SCREW, M2X8	
13	XB1-2300-605		2	SCREW, MACHINE M3X6	
14	XB4-7200-609		3	SCREW, M2X6	
15	XB4-7300-609		1	SCREW, TAP, BINDING HEAD, M3X6	
16	XB1-2301-406		1	SCREW, BH 3X14	
17	XB1-2300-407		10	SCREW, M3X4	
18	XB4-7260-809		6	SCREW, FT, BH 2.6X8	

## WASHERS

FIGURE & KEY No.	PART No.	R A N K	Q T Y	DESCRIPTION	REMARKS
W - 1	XD2-1100-502		1	RETAINING RING (E-TYPE)	
2	XD1-4100-402		1	TOOTHED LOCK WASHER (SUS)	
3	XD2-1100-402		1	RETAINING RING (E-TYPE)	
4	XD2-1100-642		4	RETAINING RING (E-TYPE)	
5	XD2-2300-202		1	GRIP RING	

## 4. TOOL

FIGURE 28 TOOL



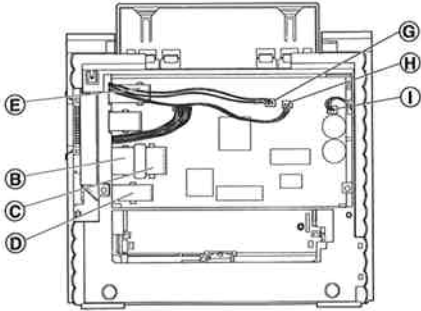
FIGURE & KEY No.	PART No.	R A N K	Q T Y	DESCRIPTION	REMARKS
28 - T1	TKC-0953-000		1	GREASE FLOIL G311S (20GS)	



# 5. GUIDE TO REPLACEMENT

**FIGURE 3-a**

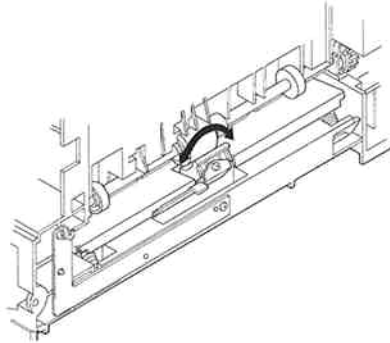
See Page  
2 - 5



Arrange the SCNT board wiring as shown in the diagram.

**FIGURE 8-a**

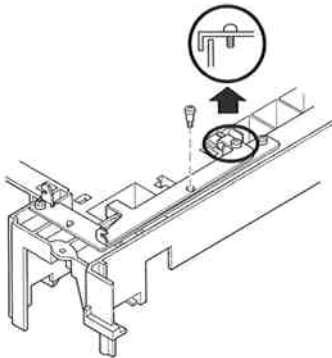
See Page  
2 - 15



Having attached the recording paper separation pad, check whether it moves left and right, as indicated by the arrows.

**FIGURE 9-a**

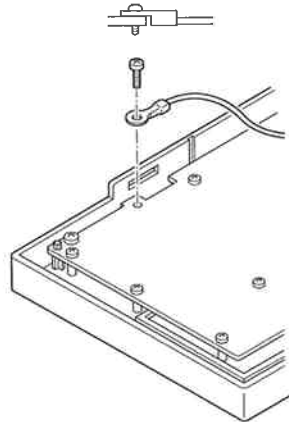
See Page  
2 - 17



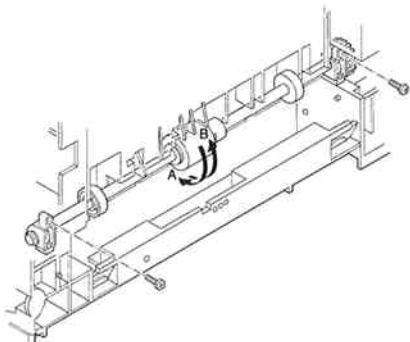
Attach the recording paper release lever as shown in the diagram.

**FIGURE 11-a**

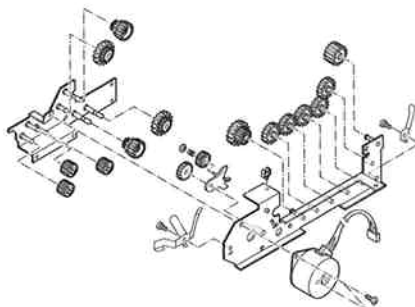
See Page  
2 - 21



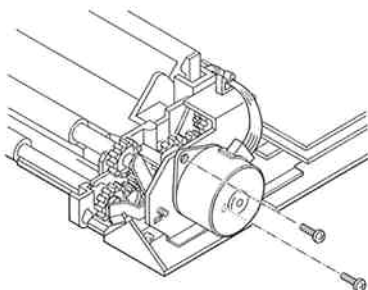
When attaching the ground wire to the OPCNT board, ensure that the ring at the end of the wire faces as shown in the diagram.

**FIGURE 14-a**See Page  
2 - 27

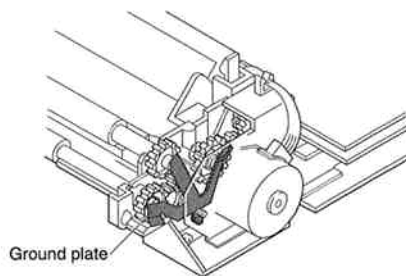
When attaching the pickup roller, rotate it by hand and check that it turns in direction A, and not in direction B.

**FIGURE 15-a**See Page  
2 - 29

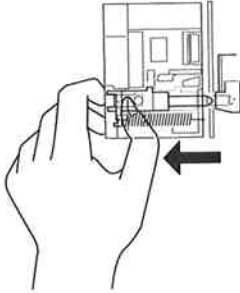
The plastic tabs which secure the gears, one removed, should be replaced with new ones.

**FIGURE 15-b**See Page  
2 - 29

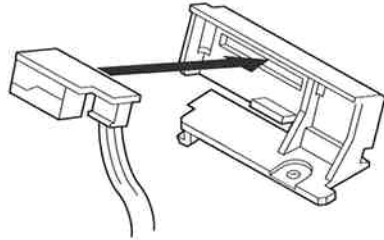
Be careful not to attach the document reading motor in reverse.

**FIGURE 15-c**See Page  
2 - 29

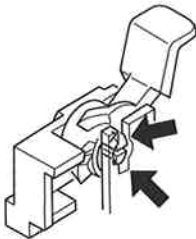
When attaching the ground plate, ensure that it properly contacts each of the three rollers, and take care that it does not get bent out of shape.

**FIGURE 16-a**See Page  
2 - 31

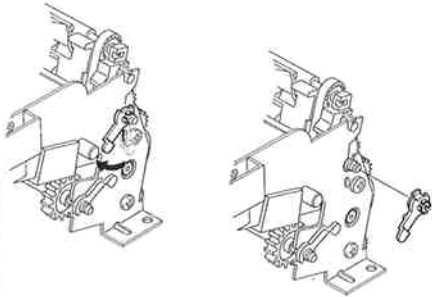
Remove the purge unit while sliding the pin to the left, as shown in the diagram.

**FIGURE 16-b**See Page  
2 - 31

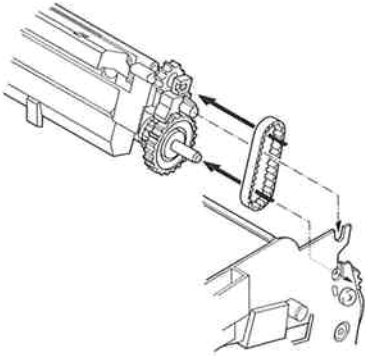
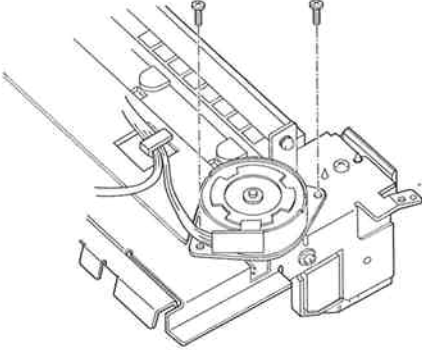
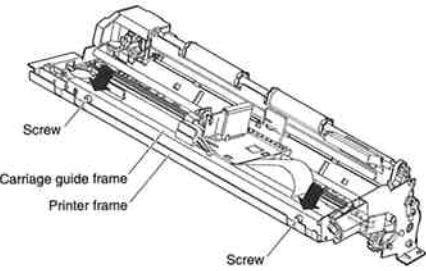
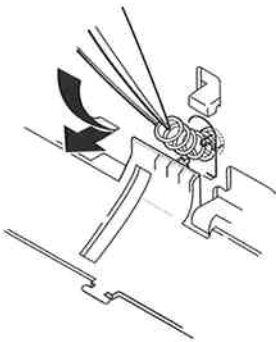
When attaching the ink detector sensor board, make sure that it fits correctly into the hole in the holder.

**FIGURE 18-a**See Page  
2 - 35

Remove while pressing in the direction of the arrows.

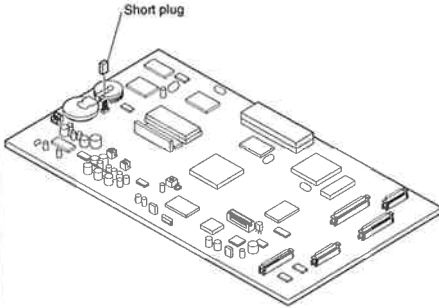
**FIGURE 20-a**See Page  
2 - 39

To remove the bushing, snap it off by forcing it in the direction indicated by the arrow.

<p><b>FIGURE 20-b</b></p>	<p>See Page 2 - 39</p>	<p><b>FIGURE 21-a</b></p>	<p>See Page 2 - 41</p>
 <p>When attaching the platen, be sure not to forget the transmission belt illustrated in the diagram.</p>		 <p>Be careful not to attach the carriage motor in reverse.</p>	
<p><b>FIGURE 22-a</b></p>	<p>See Page 2 - 43</p>	<p><b>FIGURE 22-b</b></p>	<p>See Page 2 - 43</p>
 <p>Screw Carriage guide frame Printer frame Screw</p> <p>When attaching the carriage guide frame, press the printer frame down (in the direction of the arrows) and tighten the screws.</p>		 <p>Attach the spring with precision pliers, in the direction of the arrow.</p>	

**FIGURE 26-a**

See Page  
2 - 51



The replacement SCNT board does not come with the short plug shown in the diagram. When replacing the SCNT board, the plug should be taken from the old one and used on the new one.

This page intentionally left blank

# 6. NUMERICAL INDEX

PART NUMBER	FIGURE & KEY No.	DESCRIPTION	PART NUMBER	FIGURE & KEY No.	DESCRIPTION
HA1-3001-000	27 - 1	FILTER, MECHANICAL	HB1-0260-000	12 - 3	PLATE, PRESSURE
HA1-3002-000	27 - 2	FILTER B, MECHANICAL	HB1-0261-000	12 - 4	PLATE, PRESSURE
HA1-3064-000	8 - 3	ROLLER, BACK UP	HB1-0262-000	4 - 6	BELT, STOPPER
	12 - 6		HB1-0263-000	12 - 5	SHEET WITH CABLE, GROUNDING
HA1-3066-000	12 - 7	SHAFT, BACK UP ROLLER B	HB1-0266-000	12 - 10	SPRING, LEAF, GUIDE
HA1-3185-000	27 - 3	SEAL, RUBBER	HB1-0267-000	12 - 12	SHEET, SEPARATION GUIDE
HA1-3935-000	9 - 12	RUBBER PAD	HB1-0268-000	11 - 7	COVER, PANEL
HA1-4279-000	27 - 4	HOLDER, SPEAKER	HB1-0269-000	11 - 13	KEY TOP, "START"
HA1-5412-000	27 - 15	PLATE, NOISE SHIELD (CT-15)	HB1-0270-000	11 - 15	KEY TOP, "HANDS FREE"
HA1-6102-000	8 - 12	BRUSH, STATIC CHARGE	HB1-0271-000	11 - 16	KEY TOP, "DIAL"
HA1-6141-000	27 - 5	COVER, UPPER (AG)	HB1-0272-000	11 - 8	KEY TOP, "ONE TOUCH DIAL"
HA1-6142-000	27 - 8	COVER, LOWER (AG)	HB1-0273-000	11 - 11	KEY TOP, "SEARCH"
HA1-6143-000	27 - 6	COVER, SCREW (AG)	HB1-0274-000	11 - 12	KEY TOP, "FUNCTION"
HA1-6144-000	27 - 7	KEY TOP F (AG)	HB1-0275-000	11 - 17	KEY TOP, "PRINTER"
HA1-6221-000	8 - 4	SHAFT, BACK ROLLER A	HB1-0276-000	11 - 10	KEY TOP, "ANSWERING"
HA1-6280-000	12 - 2	SHAFT, BACK UP ROLLER B (B4)	HB1-0277-000	11 - 9	COVER, LED
HA2-2128-000	1 - 5	HOLDER, HANDSET	HB1-0278-000	11 - 3	COVER, DISPLAY
HA2-2651-000	2 - 4	LABEL, CARTRIDGE	HB1-0279-000	11 - 2	SHEET, OPERATION
HB1-0105-000	17 - 2	HOLDER, CARRIAGE RIBBON CABLE	HB1-0280-000	1 - 11	SHEET, ONE TOUCH DIAL
HB1-0113-000	19 - 5	BASE, CARRIAGE	HB1-0281-000	1 - 12	COVER, SHEET
HB1-0114-000	19 - 1	GUIDE, RIBBON CABLE	HB1-0282-000	11 - 14	KEY TOP, "STOP"
HB1-0115-000	18 - 9	COVER, CARRIAGE TOP	HB1-0283-000	11 - 1	COVER, BUTTON
HB1-0116-000	18 - 6	PIN, CARRIAGE	HB1-0284-000	17 - 4	SHAFT, CARRIAGE
HB1-0117-000	18 - 7	ARM, CARRIAGE	HB1-0285-000	23 - 5	FRAME, PRINTER
HB1-0212-000	1 - 8	TRAY, DOCUMENT	HB1-0286-000	17 - 1	GUIDE, CORNER
HB1-0213-000	3 - 4	COVER, MODULAR	HB1-0287-000	21 - 8	ROLLER, PAPER FEED
HB1-0214-000	3 - 2	COVER, BOTTOM	HB1-0288-000	22 - 1	FRAM, CARRIAGE GUIDE
HB1-0216-000	9 - 9	PLATE, INLET STOP	HB1-0289-000	22 - 3	PLATE, PRESSURE
HB1-0218-000	9 - 6	FRAME, MAIN	HB1-0290-000	11 - 6	PLATE, GROUNDING
HB1-0219-000	9 - 13	PLATE, CASSETTE PRESS	HB1-0292-000	15 - 16	PLATE, GROUNDING
HB1-0220-000	9 - 2	PLATE, GROUNDING, RIGHT	HB1-0299-000	20 - 4	ROLLER, PAPER EJECT
HB1-0224-000	8 - 2	ARM, DETECTION	HB1-0300-000	16 - 2	COVER, FOOTER SENSOR
HB1-0225-000	9 - 15	PLATE, PAPER RELEASE	HB1-0301-000	20 - 3	PLATEN
HB1-0226-000	9 - 16	PLATE, PAPER RELEASE	HB1-0302-000	23 - 4	GUIDE, PRESSURE PLATE
HB1-0230-000	6 - 9	PLATE, POSITIONING	HB1-0303-000	24 - 4	FRAME, CASSETTE
HB1-0231-000	6 - 1	COVER, DOCUMENT GUIDE, LOWER	HB1-0304-000	24 - 3	GUIDE, PAPER WIDTH
HB1-0232-000	6 - 3	ARM, DETECTION	HB1-0306-000	24 - 2	SHEET, FRICTION
HB1-0233-000	6 - 2	ARM, DETECTION	HB1-0307-000	24 - 6	COVER, CASSETTE
HB1-0235-000	13 - 6	ROLLER, SEPARATION	HB1-0310-000	10 - 7	COVER, UPPER
HB1-0236-000	13 - 7	SHAFT, SEPARATION ROLLER	HB1-0311-000	10 - 1	PLATE, SPEAKER MOUNTING
HB1-0237-000	13 - 4	HOLDER, SEPARATION ROLLER	HB1-0313-000	10 - 3	GUIDE, DOCUMENT, LEFT
HB1-0238-000	13 - 8	SPACER	HB1-0314-000	10 - 4	GUIDE, DOCUMENT, RIGHT
HB1-0245-000	16 - 4	HOLDER, FOOTER SENSOR	HB1-0317-000	9 - 11	FOOT, RUBBER
HB1-0246-000	15 - 6	ARM, TRANSMISSION	HB1-0318-000	9 - 18	FILTER, MECHANICAL
HB1-0247-000	15 - 3	PLATE, GROUNDING	HB1-0319-000	5 - 2	TRAY, WASTE INK
HB1-0248-000	8 - 6	SPRING, LEAF	HB1-0320-000	5 - 3	ABSORBER, WASTE INK
HB1-0250-000	8 - 5	BRACKET	HB1-0322-000	24 - 8	LABEL, UPPER LIMIT
HB1-0251-000	14 - 3	CLUTCH	HB1-0372-000	21 - 10	COVER, SENSOR
HB1-0254-000	8 - 8	PLATE, SEPARATION GUIDE	HB1-0410-000	5 - 4	ABSORBER, WASTE INK
HB1-0255-000	8 - 13	SPRING, LEAF GROUNDING	HB1-1002-000	10 - 8	PLATE, PRESSURE
HB1-0256-000	14 - 4	ROLLER, PICKUP	HB1-1003-000	9 - 19	GUIDE, PAPER PICKUP
HB1-0258-000	14 - 2	ROLLER, SPACER	HB1-1007-000	11 - 18	SHEET, OPCNT INSULATOR
HB1-0259-000	12 - 11	COVER, DOCUMENT GUIDE, UPPER	HB1-1008-000	10 - 9	PAD, FORM RUBBER

PART NUMBER	FIGURE & KEY No.	DESCRIPTION	PART NUMBER	FIGURE & KEY No.	DESCRIPTION
HB1-1010-000	1 - 7	TRAY, RECORDING PAPER	HH2-2350-000	3 - 6	FLAT CABLE
HB1-1030-000	10 - 10	INK ABSORBAR	HH2-2351-000	6 - 5	CABLE WITH CONNECTER, 10P
HB1-1031-000	10 - 11	LABEL,RECORDING PAPER CAUTION	HH2-2354-000	3 - 7	CABLE WITH CONNECTER, 7P
HF1-0913-000	6 - 8	LOCK, OPERATION PANEL UNIT	HH2-2358-000	21 - 12	CABLE WITH CONNECTOR, 2P
HF5-0011-000	3 - 3	RUBBER FOOT UNIT	HH2-2359-000	9 - 8	CABLE WITH INLET
HF5-0012-000	15 - 14	PLATE, GEAR SHAFT, LEFT	HH2-2414-000	9 - 20	CABLE WITH CONNECTOR
HF5-0013-000	15 - 2	PLATE, GEAR SHAFT, RIGHT	HH3-5269-000	7 - 7	POWER SUPPLY UNIT
HF5-0014-000	12 - 8	SEPARATION GUIDE UNIT	HH4-2468-000	26 - 3	IC, AM27C040-150DC, EP-ROM <1>
HF5-0015-000	7 - 8	PLATE, GROUNDING	HH7-1299-000	27 - 12	RINGER PKM34EW-12
HF5-0016-000	9 - 10	LOWER COVER UNIT	HH7-2034-000	6 - 4	CONTACT SENSOR
HF5-0017-000	8 - 10	LOCK, OPERATION PANEL UNIT	HH7-2036-000	21 - 3	MOTOR, PAPER FEED
HF5-0019-000	24 - 1	PAPER LIFTING PLATE UNIT	HH7-2037-000	15 - 1	PULSE MOTOR, READER
HF5-0025-000	24 - 5	LETTER CASSETTE HOLDER UNIT	HH7-2038-000	10 - 2	SPEAKER
HF5-0027-000	9 - 1	GROUNDING PLATE UNIT	HS1-0253-000	10 - 6	GEAR, 16T (POM)
HF5-0028-000	8 - 7	PAPER GUIDE UNIT	HS1-0283-000	13 - 1	GEAR, 28T
HF5-0030-000	1 - 3	LEGAL CASSETTE HOLDER UNIT	HS1-1063-000	9 - 5	BUSHING
HG1-2185-050	1 - 4	HANDSET ASSY (USA, AG)		13 - 2	
HG1-2196-000	27 - 9	TELCNT BOARD ASSY	HS1-2143-000	10 - 5	SPRING STAINLESS
HG1-4083-000	3 - 1	SCNT BOARD ASSY	HS1-9004-000	9 - 21	SCREW M3X4
HG1-4084-000	7 - 4	DRIVER BOARD ASSY	HS5-0023-000	13 - 3	GEAR, 21T
HG1-4085-000	7 - 3	NCU BOARD ASSY	HS5-0024-000	4 - 3	GEAR, 21T
HG1-4086-000	11 - 4	OPCNT BOARD ASSY		9 - 4	
HG1-4087-000	8 - 1	SENSOR BOARD ASSY	HS5-0025-000	15 - 13	GEAR, STEPPED
HG1-4088-000	21 - 13	SENSOR BOARD ASSY	HS5-0026-000	15 - 12	GEAR, STEPPED
HG1-4089-000	9 - 17	MICROPHONE BOARD ASSY	HS5-0027-000	15 - 4	GEAR, 36T
HG1-4090-000	7 - 1	RELAY BOARD ASSY	HS5-0028-000	15 - 5	GEAR, 24T
HG1-4091-000	3 - 5	INTERFACE BOARD ASSY	HS5-0029-000	15 - 11	GEAR, 16T
HG1-4095-000	19 - 4	CARRIAGE RIBON CABLE ASSY	HS5-0030-000	15 - 8	GEAR, 26T
HG1-4108-000	16 - 3	SENSOR BOARD ASSY	HS5-0031-000	15 - 9	GEAR, 23T
HG1-4167-000	1 - 13	DRIVER SOFTWARE	HS5-0032-000	15 - 7	GEAR, STEPPED
HG5-0057-000	9 - 3	EJECT ROLLER ASSY	HS5-0033-000	14 - 5	GEAR, 31T
HG5-0058-000	6 - 7	SEPARATION ROLLER ASSY	HS5-0034-000	21 - 4	GEAR, STEPPED
HG5-0062-000	9 - 7	PICK-UP ROLLER ASSY	HS5-0035-000	21 - 7	GEAR, 24T
HG5-0063-000	6 - 6	FEED ROLLER ASSY	HS5-0036-000	21 - 5	GEAR, IDLER
HG5-0064-000	4 - 2	CS ROLLER ASSY	HS5-0039-000	13 - 5	GEAR, STEPPED
HG5-0067-000	12 - 1	SEPARATION GUIDE ASSY	HS5-0040-000	13 - 10	GEAR, 35T
HG5-0068-000	4 - 1	OPERATION PANEL ASSY	HS5-1006-000	4 - 4	BUSHING
HG5-0071-000	5 - 1	PRINTER ASSY	HS5-2011-000	15 - 15	SPRING, COIL
HG5-0072-000	16 - 1	PURGE UNIT	HS5-2012-000	8 - 9	SPRING, COIL
HG5-0075-000	20 - 7	PAPER FEED ROLLER ASSY	HS5-2013-000	12 - 9	SPRING, COIL
HG5-0080-000	2 - 1	PRINTER COVER ASSY	HS5-2014-000	24 - 7	SPRING, PAPER LIFTING
HG5-0153-000	17 - 3	CARRIAGE UNIT	HS5-2015-000	18 - 8	SPRING, HOOK AND COIL
HH2-1277-000	27 - 10	MODULAR JACK	HS5-2027-000	13 - 9	SPRING, CLUCH
HH2-1703-000	27 - 11	CORD, COILED (A.G.)	HS5-2030-000	9 - 14	SPRING, COIL
HH2-2292-000	1 - 2	MODULAR CORD, 6P (W)	HS5-2035-000	22 - 2	SPRING, COIL
HH2-2341-000	8 - 14	CABLE WITH RING TONGUE	HS5-3004-000	20 - 5	PULLY
HH2-2342-000	7 - 9	CABLE WITH RING TONGUE	HS5-9003-000	22 - 5	SCREW, BH(RED) M3X4
HH2-2344-000	6 - 10	CABLE WITH RING TONGUE	HT1-2027-000	1 - 10	INSTRUCTION BOOK, PRINTER
HH2-2345-000	11 - 5	CABLE WITH RING TONGUE	HT1-2029-000	1 - 9	INSTRUCTION BOOK (ENG)
HH2-2346-000	7 - 6	FLAT CABLE	HT1-3017-000	1 - 9	INSTRUCTION BOOK (FRENCH)
HH2-2347-000	7 - 5	FLAT CABLE	HT1-3020-000	1 - 10	INSTRUCTION BOOK, PRINTER (FRN)
HH2-2348-000	7 - 2	FLAT CABLE	HY7-2608-000	25 - 1	FUSE, 3.15A 125V
HH2-2349-000	4 - 5	FLAT CABLE	QA2-0503-000	3 - 9	CAP. CONNECTOR



PART NUMBER	FIGURE & KEY No.	DESCRIPTION	PART NUMBER	FIGURE & KEY No.	DESCRIPTION
QB1-0411-000	23 - 3	ARM, PAPER SENSOR	XB1-2400-803	S - 10	SCREW, MACHINE M4X6
QB1-0412-000	23 - 2	SPRING, TORSION	XB2-7300-607	S - 3	SCREW, M3X6
QB1-0413-000	23 - 1	ARM, SENSOR	XB2-7301-007	S - 9	SCREW WITH WASHER, PH3X10
QB1-0417-000	20 - 1	BUSHING	XB4-7200-609	S - 14	SCREW, M2X6
	21 - 6		XB4-7200-805	S - 12	SCREW, M2X8
QB1-0420-000	20 - 12	ARM, TRANSMISSION	XB4-7260-809	S - 18	SCREW, FT, BH 2.6X8
QB1-0421-000	20 - 10	SPRING, COIL	XB4-7300-609	S - 15	SCREW, TAP, BINDING HEAD, M3X6
QB1-0422-000	20 - 8	BUSHING	XB4-7300-807	S - 1	SCREW, TAP TIGHT, BINDING HEAD
	21 - 9		XB4-7300-809	S - 8	SCREW, TAP, BINDING HEAD, M3X8
QB1-0423-000	20 - 2	SPRING, COIL	XB4-7301-007	S - 6	SCREW, TAP TIGHT BHM3X10
QB1-0425-000	20 - 11	GEAR, TRANSMISSION	XB5-6300-605	S - 5	SCREW, TP, PH3X6
QB1-0434-000	18 - 10	BELT, CARRIAGE	XD1-4100-402	W - 2	TOOTHED LOCK WASHER (SUS)
QB1-0436-000	19 - 3	PAD, CONTACT	XD2-1100-402	W - 3	RETAINING RING (E-TYPE)
QB1-0437-000	18 - 2	LEVER, HOOKING	XD2-1100-502	W - 1	RETAINING RING (E-TYPE)
QB1-0438-000	18 - 4	HOOK, CARRIAGE	XD2-1100-642	W - 4	RETAINING RING (E-TYPE)
QB1-0439-000	18 - 3	SPRING, COIL	XD2-2300-202	W - 5	GRIP RING
QB1-0440-000	18 - 1	COVER, HOOK	XF9-0485-000	20 - 6	BELT, TRANSMISSION
QB1-0441-000	19 - 2	HOLDER, RIBBON CABLE (UPPER)			
QB1-0443-000	18 - 5	WHEEL, CARRIAGE			
QB1-0500-000	21 - 2	GEAR, SLOW DOWN			
QB1-0501-000	23 - 6	ROLLER, IDLER			
QB1-0502-000	23 - 7	BRACKET, IDLER			
QB1-0503-000	23 - 8	SPRING, COIL			
QB1-0517-000	2 - 2	SPUR			
QB1-0518-000	2 - 3	SPUR SHAFT			
QB1-0622-000	20 - 9	WASHER, PLAIN			
QB1-0684-000	22 - 4	ROLLER, PRESSURE			
QH4-4038-000	21 - 1	MOTOR, CARRIAGE			
RS1-1013-000	14 - 1	BUSHING			
RS1-9016-000	8 - 11	SCREW, STEPPED, M3			
TKC-0953-000	28 - T1	GREASE FLOIL G311S (20GS)			
WC4-5052-000	21 - 11	MICRO SWITCH			
WEB-5131-000	7 - 10	FERRITE CORE SSC-40-10-F			
WK1-5047-000	26 - 1	LITHIUM BATTERY, CR2450HC22N			
WR1-0086-000	27 - 13	MICROPHONE			
WR1-0111-000	27 - 14	SPEAKER DH-70C			
WS1-0172-000	26 - 2	PLUG, SHORT			
WS9-5038-000	3 - 8	SPACER, MODULAR			
WT2-0387-000	6 - 11	CLAMP			
WT2-0434-000	15 - 10	CLIP			
WT3-0057-000	1 - 1	POWER SUPPLY CORD, 120V			
XA1-7260-407	S - 7	SCREW, PH2.6X4			
XA9-0289-000	8 - 15	SCREW M3 L7.2			
XA9-0318-000	16 - 5	SCREW, TAP, PH2.6X8			
XA9-0476-000	4 - 7	SCREW, TP M3X8			
XA9-0613-000	20 - 13	NUT, SUS			
XA9-0718-000	1 - 6	SCREW, HANDSET HOLDER			
XB1-1301-007	S - 4	SCREW, PH3X10			
XB1-2300-407	S - 17	SCREW, M3X4			
XB1-2300-605	S - 13	SCREW, MACHINE M3X6			
XB1-2300-607	S - 2	SCREW, BH3X6(S)			
XB1-2300-809	S - 11	SCREW, BH3X8			
XB1-2301-406	S - 16	SCREW, BH 3X14			

0394 SE 1.00-0  
1096 SE 0.30-1



Printed on paper that  
contains 50% reused paper.

**Canon**